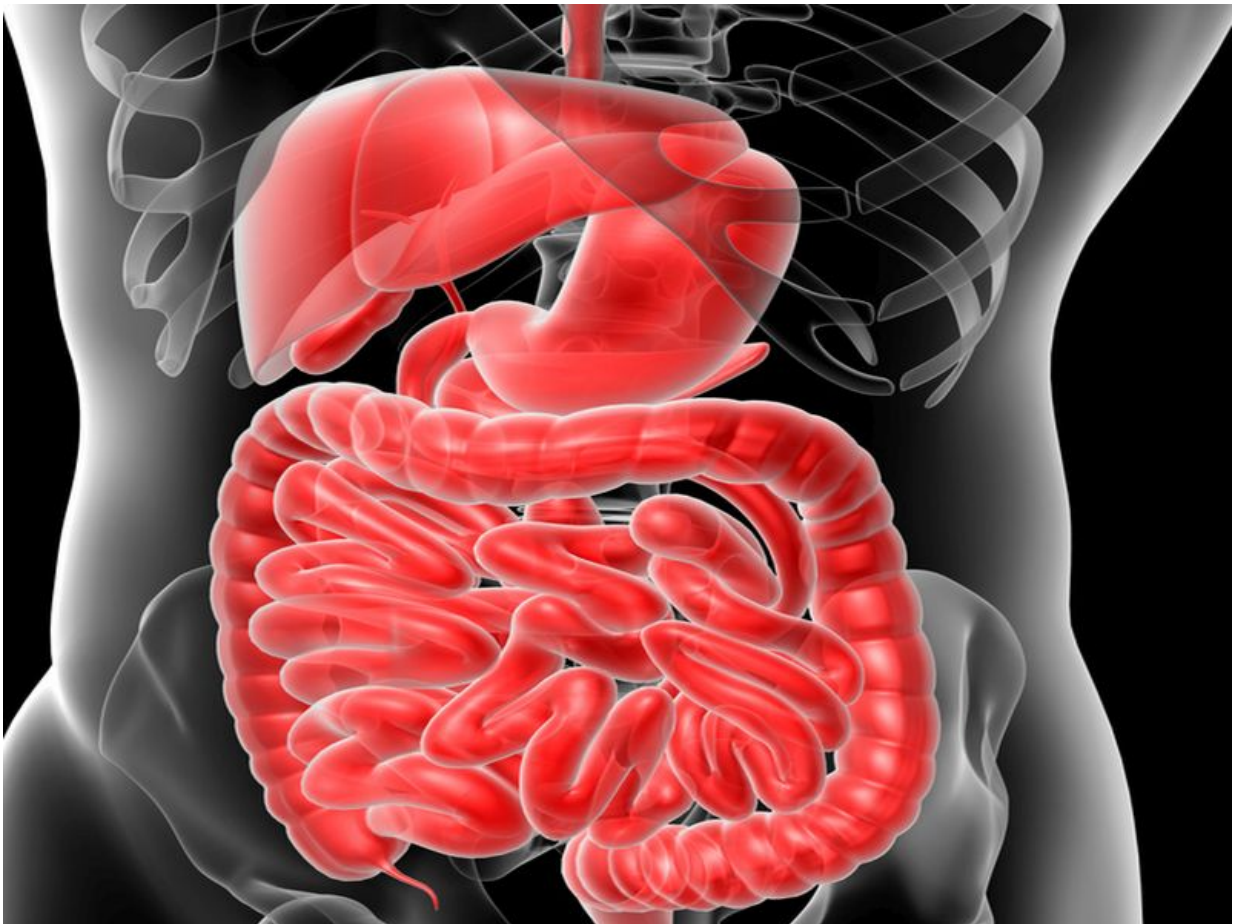


Side-to-side isoperistaltic strictureplasty helpful in Crohn's

January 5 2016



(HealthDay)—For patients with Crohn's disease (CD), side-to-side

isoperistaltic strictureplasty (SSIS) is beneficial, with acceptable recurrence rates, according to a study published online Dec. 30 in *JAMA Surgery*.

Marilena Fazi, M.D., from the University of Florence in Italy, and colleagues examined the results obtained in a monocentric population of 91 [patients](#) with CD who underwent SSIS (mean [age](#), 39.5 years; mean preoperative disease duration, 97.9 months). The procedure was performed according to the Michelassi technique in 69 patients and according to the Tonelli technique in 22 patients.

Follow-up data were available for 91.2 percent of patients, of whom 44.58 percent experienced [recurrence](#) at a mean of 55.46 months postoperatively. The researchers found that, overall, 28.9 percent of patients experienced recurrence at the SSIS site, which occurred at a mean of 48.25 months after [surgery](#) (nine medical and 15 surgical recurrence cases). There was a significant association for recurrence in the SSIS with time elapsed between diagnosis and surgery ($P = 0.03$). There was a borderline correlation between [family history](#) of CD and surgical recurrence ($P = 0.054$). In multivariate analysis, independent risk factors for recurrence were found to be age at diagnosis ($P = 0.02$), age at surgery ($P = 0.005$), family history ($P = 0.01$), and smoking habit ($P = 0.007$).

"In the short-term, SSIS leads to a resolution of symptoms in more than 90 percent of cases and the recurrence rate in the SSIS area is acceptable, even after long-term follow-up," the authors write.

More information: [Abstract](#)

[Full Text \(subscription or payment may be required\)](#)

[Editorial \(subscription or payment may be required\)](#)

Copyright © 2015 [HealthDay](#). All rights reserved.

Citation: Side-to-side isoperistaltic strictureplasty helpful in Crohn's (2016, January 5) retrieved 5 February 2024 from <https://medicalxpress.com/news/2016-01-side-to-side-isoperistaltic-strictureplasty-crohn.html>

This document is subject to copyright. Apart from any fair dealing for the purpose of private study or research, no part may be reproduced without the written permission. The content is provided for information purposes only.