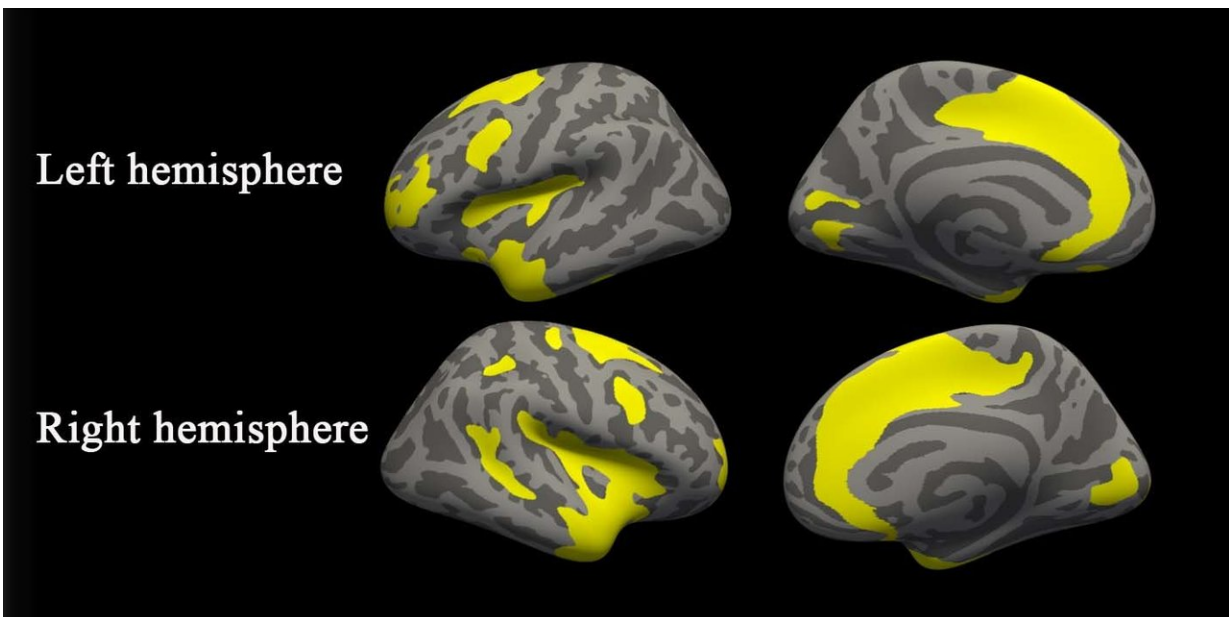


MRI uncovers brain abnormalities in people with depression and anxiety

November 20 2017



Significant cortical thickness differences among the three groups. All regions survived clusterwise-correction (p

Citation: MRI uncovers brain abnormalities in people with depression and anxiety (2017, November 20) retrieved 21 July 2023 from <https://medicalxpress.com/news/2017-11-mri-uncovers-brain-abnormalities-people.html>

This document is subject to copyright. Apart from any fair dealing for the purpose of private study or research, no part may be reproduced without the written permission. The content is provided for information purposes only.