

# Measuring brain activity associated with social behavior in mice

May 28 2019

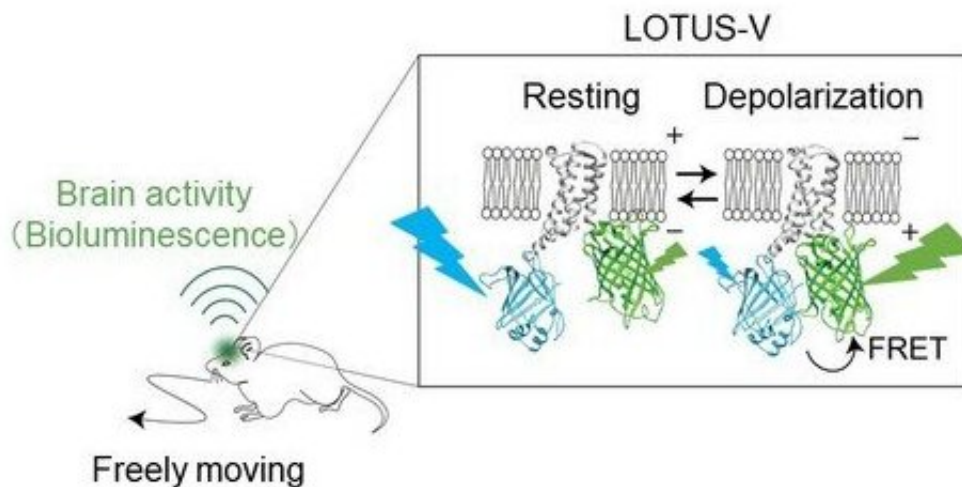


Figure 1. Schematic illustration of the wireless brain activity recording. The color of LOTUS-V bioluminescence changed from cyan to green when neurons in a brain were activated. LOTUS-V is a chimeric protein composed of a bioluminescent protein (cyan), fluorescent protein (lime green), and a voltage-sensitive domain (gray). Membrane depolarization induces conformational changes in the voltage-sensitive domain and shortens the distance between the bioluminescent and fluorescent proteins. Eventually, the efficiency of energy transfer (i.e. FRET) increased and the intensity of lime green was enhanced (conversely, the intensity of cyan decreased). Credit: Takeharu Nagai

Existing electrophysiological and fluorescence-based brain imaging techniques in mice are generally invasive, require head fixes or cables,

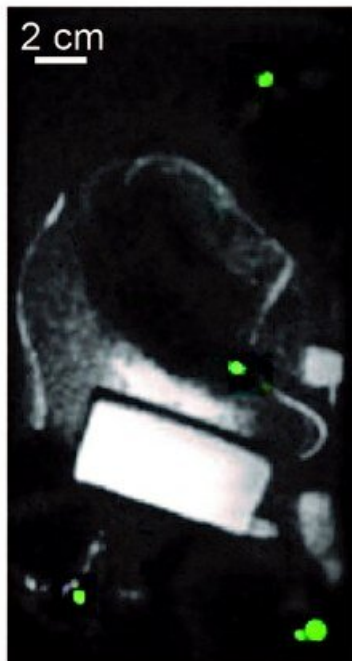
and are not suitable for long-term recordings. While there have been recent advances in imaging methods in freely moving animals, these are major limitations for researchers that are interested in the brain correlates of social behaviors.

Researchers at Osaka University have developed a new [method](#) to record [brain activity](#) simultaneously in multiple, freely moving [mice](#). The method is based on a recent bioluminescence-based indicator of membrane voltage called "LOTUS-V." The LOTUS-V bioluminescent probe is genetically encoded, which means that it is delivered to target cells non-invasively via a common gene expression system (the adeno-associated virus). Its signal is derived from cell membrane voltage changes, which reflect brain activity.

"The LOTUS-V method reported brain activity in freely moving mice with a good sensitivity and without motion artifacts," says corresponding author Takeharu Nagai. "More importantly, it could measure dynamically changing brain activity in the primary visual cortex during social interactions."

LOTUS-V was applied to cells in the primary visual cortex; this area was targeted because it is known to respond to locomotor activity and visual stimulation. LOTUS-V signal changes reflected neural activity in response to visual stimuli and locomotor activity, as well as during interactions with other mice; [neural activity](#) was significantly higher when a mouse approached others. Furthermore, the LOTUS-V signal was not affected by leaky signals emitted from other, nearby mice, which means that it faithfully reflected in vivo brain activity.

Bioluminescence from mouse's head



Velocity

Brain activity

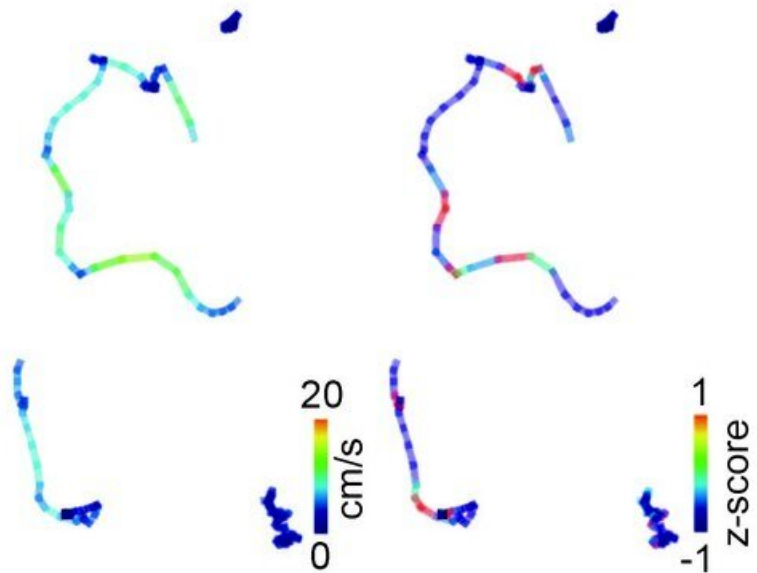


Figure 2. Local brain activity of multiple freely-moving mice in the same cage was visualized. Left: In four mice, bioluminescence from the primary visual cortex (green) was observed at the same time. Center and Right: Pseudo-colored locomotion trajectories, indicating velocity (center) and brain activity (right) of four mice freely interacting each other in the same cage. Credit: Osaka University

"Our method successfully detected activity of the superficial layer of the [primary visual cortex](#)—this is about 300  $\mu\text{m}$  deep," says Shigenori Inagaki, first author of the study. "It will be important to test its applicability to recording in deeper brain regions."

While the temporal resolution of the LOTUS-V method was sufficient to investigate the dynamics of [brain](#) activity triggered by specific events, it

is not yet superior to that of the fiber-based method.

"These results could be really exciting for social neurobiologists," Nagai says. "It is minimally invasive, doesn't require cables or head fixes, and is suitable for long-term recordings in freely moving animals, meaning it could be useful in a broad range of other research fields, too."

**More information:** Shigenori Inagaki et al. Imaging local brain activity of multiple freely moving mice sharing the same environment, *Scientific Reports* (2019). DOI: [10.1038/s41598-019-43897-x](https://doi.org/10.1038/s41598-019-43897-x)

Provided by Osaka University

Citation: Measuring brain activity associated with social behavior in mice (2019, May 28) retrieved 18 July 2023 from <https://medicalxpress.com/news/2019-05-brain-social-behavior-mice.html>

This document is subject to copyright. Apart from any fair dealing for the purpose of private study or research, no part may be reproduced without the written permission. The content is provided for information purposes only.