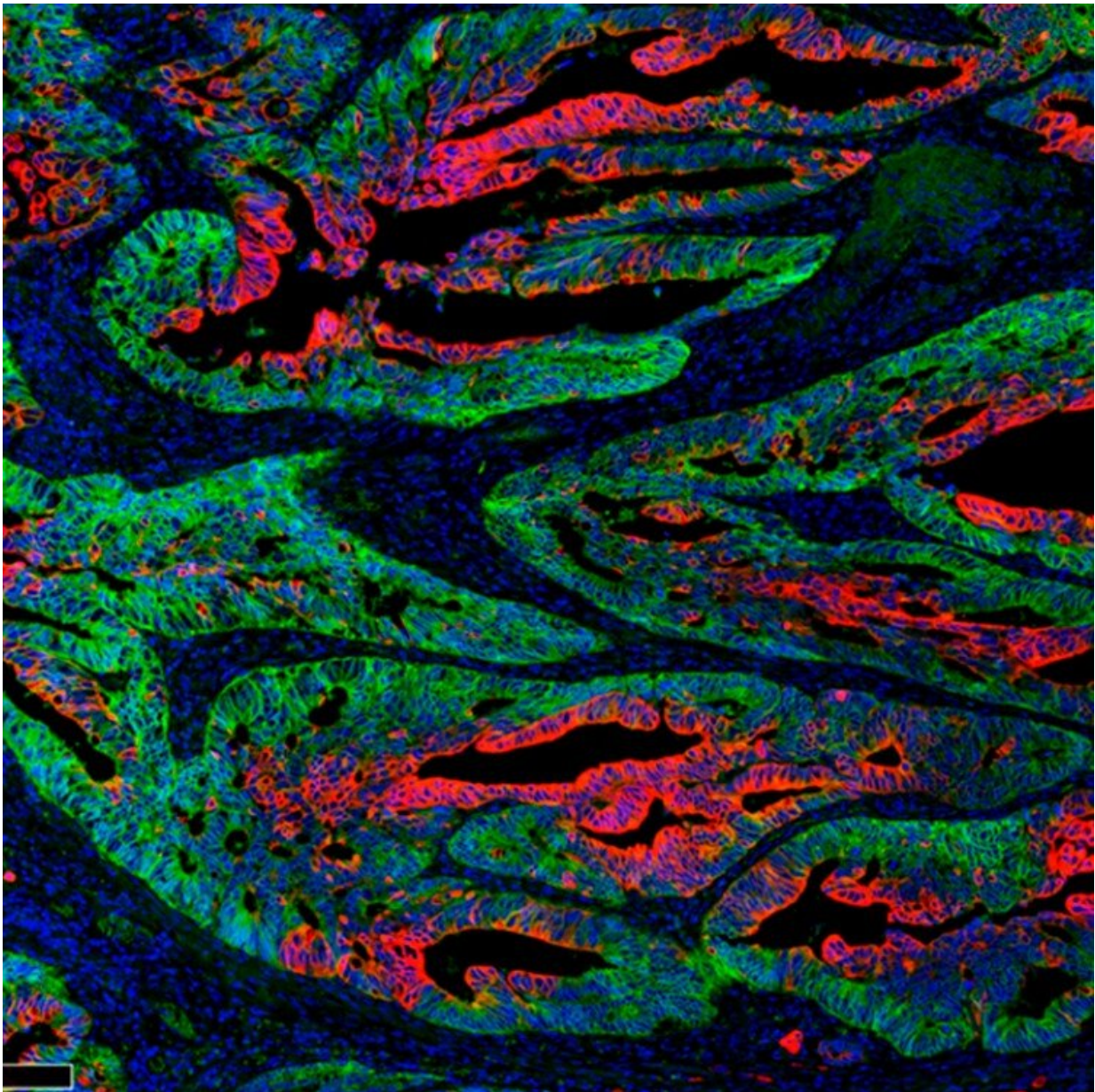


Biosynthetic capacity: The key to switch-off cancer stem cells

May 12 2020



Tumour heterogeneity: cancer stem cells (green) and differentiated cells (in red).
Credit: IRB Barcelona.

Tumours are not a uniform mass of cells. Colon cancers bear differentiated-like cells, similar to the functional cells of the intestinal wall, and pluripotent cells—the so-called tumour stem cells. The latter fuel tumour growth and cause metastasis. A group of scientists headed by Eduard Batlle, ICREA researcher, group leader at the CIBER for Cancer (CIBERONC), and head of the Colorectal Cancer lab at IRB Barcelona, has demonstrated that the essence of pluripotency in colon cancer stem cells lies in their ability to synthesise proteins, a property that could be investigated further as a therapeutic target.

"Current treatments for colon cancer are not efficient because they do not eliminate all pluripotent cells. Various research groups, including ours, have observed that when cancer stem cells are removed via experimental approaches, other differentiated cells can return to a pluripotent state and regenerate the [tumour](#). This is a phenomenon that we call plasticity," explains Batlle.

In this study, the Colorectal Cancer Lab at IRB Barcelona has observed that protein synthesis in tumours occurs in specific regions that coincide with cancer stem cell niches. Moreover, tumours exhibit a protein production gradient, and once this activity is exhausted, tumour cells irreversibly lose their capacity to return to the cancer stem cell state. Thus, it is their biosynthetic capacity that allows cancer stem cells to contribute unlimitedly to tumour growth.

"This discovery is an attempt to eradicate [cancer stem cells](#) based on their function rather than on their identity," explains Batlle. "A desirable next step would be to investigate whether it is possible to therapeutically

interfere with the biosynthetic capacity of tumour stem cells in order to stop tumour growth and prevent metastasis," he adds.

Blocking biosynthetic capacity halts tumour growth

"Using mouse models of [colon cancer](#), we observed that by blocking [protein synthesis](#) in [cancer](#) cells or by eliminating those cells with this capacity we could stop tumour growth in an irreversible manner. The next step is to study the signals in the tumour environment that confer or maintain the biosynthetic capacity in certain tumour cells," explains Clara Morral, first author of the study.

Organoids and CRISPR, key developments for research success

The work has been conducted using organoids—mini-tumours derived from patients that are grown in the lab, which allow the study of tumour cell heterogeneity and organisation. The organoid culture system is a powerful tool to mimic the characteristics of the cancers found in patients. The study also involved genetic modification of tumour cells using CRISPR-Cas9. This technique allowed researchers to specifically eliminate [cells](#) with biosynthetic [capacity](#) and thus examine their contribution to tumour growth.

More information: Clara Morral et al, Zonation of Ribosomal DNA Transcription Defines a Stem Cell Hierarchy in Colorectal Cancer, *Cell Stem Cell* (2020). [DOI: 10.1016/j.stem.2020.04.012](https://doi.org/10.1016/j.stem.2020.04.012)

Provided by Institute for Research in Biomedicine (IRB Barcelona)

Citation: Biosynthetic capacity: The key to switch-off cancer stem cells (2020, May 12) retrieved 2 July 2023 from

<https://medicalxpress.com/news/2020-05-biosynthetic-capacity-key-switch-off-cancer.html>

This document is subject to copyright. Apart from any fair dealing for the purpose of private study or research, no part may be reproduced without the written permission. The content is provided for information purposes only.