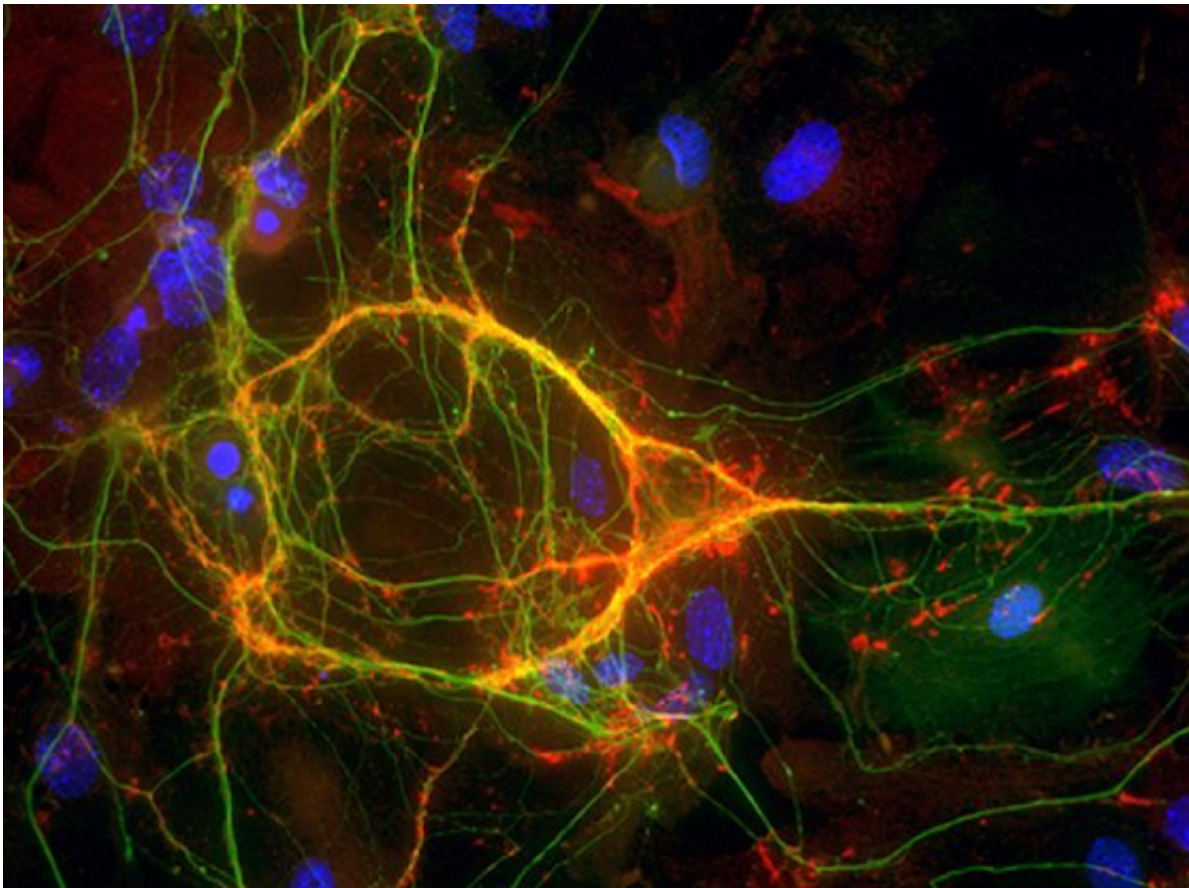


# The origin of of two neuron types reveals how some cellular diversity emerges in the brain

September 23 2021, by Alessandra Dicorato

---



Interneurons are neurons located exclusively in the central nervous system that enable communication between different neurons. Credit: McBain Laboratory, National Institute of Child Health and Human

Inside our brains lives a myriad of cell types that support complex

human thought—from our ability to make memories and decisions, to our capacity for smell, taste, movement, and communication. Scientists do not yet fully understand how this critical cellular diversity arises as the brain grows and develops.

Now, researchers at the Broad Institute of MIT and Harvard and the Flatiron Institute have shown how two key cell types in the brain's cortex arise from a single progenitor in mice. Led by Kathryn Allaway, Orly Wapinski, and Gord Fishell of the Stanley Center for Psychiatric Research at Broad, as well as Mariano Gabitto and Richard Bonneau of the Flatiron Institute, the researchers have discovered genetic and molecular factors that allow the two populations of interneurons to develop different identities.

The findings, published in *Nature*, could provide a model for studying the emergence of cellular diversity in the brain. Because many neurodevelopmental and psychiatric disorders affect different cell types, including interneurons, differently, the authors say their work could also help researchers better understand how these disorders come about. The methods developed by the team could also help scientists study the effect of disease-related genetic mutations on various cell types in the brain.

"Part of the future of neuroscience will be to create tools that we can use to correct the activity of very specific cell types," said Fishell, an institute member at Broad and a professor of neurobiology at Harvard Medical School. "An important step towards those tools is what we've done in this study: getting more detailed knowledge of the individual cell types."

## **Inhibitory interneurons**

Interneurons are neurons located exclusively in the central nervous system, and are more diverse in shape, connectivity, and function than

any other type of cell in the front of the brain. The two most prominent types of interneurons are parvalbumin (PV)- and somatostatin (SST)-positive [cells](#). In adults, these cells could not be more dissimilar.

While both are inhibitory cells—they stop or slow down neuronal firing—PV and SST cells do this in different ways. PV cells act as a kind of veto, stopping a signal altogether, whereas SST cells fine-tune neuronal communication, allowing some signals to go through while halting others.

Fishell's team knew from previous work that despite their differences, PV and SST cells arise from the same cell type. To determine what factors might influence how and when the cells diverge, the researchers used a combination of RNA sequencing, which provides information about how genes are expressed, and a technique called Assay for Transposase-Accessible Chromatin using sequencing, or ATAC-seq, to analyze the two cell types. ATAC-seq reveals which parts of chromatin—the tightly wound package of DNA and protein in the cell's nucleus—are accessible to the cell's protein-making machinery. "When you bring these two [data sets](#) together, it's a really rich data source for building amazing computational models for [gene regulation](#)," said Kathryn Allaway, co-first author of the study and a graduate student in Fishell's lab when the research took place.

Using these data, the researchers built maps showing how molecular regulators—such as complexes of DNA, RNA, and proteins—interconnect to control gene expression in mouse PV and SST cells. In collaboration with Richard Bonneau at the Flatiron Institute, Fishell's team modeled these gene regulatory networks computationally.

"We have been absolutely privileged to work with computational scientists who can make use of this complicated data," said Fishell. "And we're very proud and very, very happy to be here in the early stages of

watching biology transition from an experimental science to a field where there's true theory behind it."

## Evaluating models

By comparing gene regulatory networks for different time points before and after birth, the team found that the two interneuron types diverged when they stopped migrating during early development and settled in the cortex. They found that certain proteins called [transcription factors](#), which help regulate gene activity, were shared in both cell types but acted differently to direct development of the two cell types. This suggests that chromatin architecture plays a major role in maintaining the ultimate fate of the cells by controlling which transcription factors can access DNA to regulate gene expression.

Using their computational models, Fishell's team was then able to predict the impact of certain genes on cell type development. In particular, they found that the Mef2c gene, which is mutated in a severe form of autism, was involved in sculpting chromatin in both PV and SST cells but was particularly critical for PV cells. When the team disabled Mef2c in cells in the lab, they confirmed that their model accurately predicted 80 percent of the molecular targets that are regulated by Mef2c in both SST and PV cells.

Fishell says that the accuracy of their model suggests that the team's approach could be used to predict the impact of genetic mutations on other cell types quickly before running experiments. With that kind of insight, researchers could ultimately develop tools to target gene expression in specific cell types and restore normal activity in cells that might be malfunctioning in a particular neurodevelopmental or psychiatric disorder.

Next, the researchers will work towards understanding how other

proteins besides transcription factors, such as chromatin modifiers, affect [gene expression](#) in different cells.

"In 10 years, we're going to be using incredibly powerful computation with incredibly powerful DNA and RNA work to model how [genes](#) affect the way our brain functions at a cellular level," said Fishell. "That is a holy grail. We're not there yet, but this really took a big step in the direction of predicting how gene loss affects brain function."

**More information:** Kathryn C. Allaway et al, Genetic and epigenetic coordination of cortical interneuron development. *Nature* (2021). [doi.org/10.1038/s41586-021-03933-1](https://doi.org/10.1038/s41586-021-03933-1)

Provided by Broad Institute of MIT and Harvard

Citation: The origin of of two neuron types reveals how some cellular diversity emerges in the brain (2021, September 23) retrieved 17 February 2023 from <https://medicalxpress.com/news/2021-09-neuron-reveals-cellular-diversity-emerges.html>

This document is subject to copyright. Apart from any fair dealing for the purpose of private study or research, no part may be reproduced without the written permission. The content is provided for information purposes only.