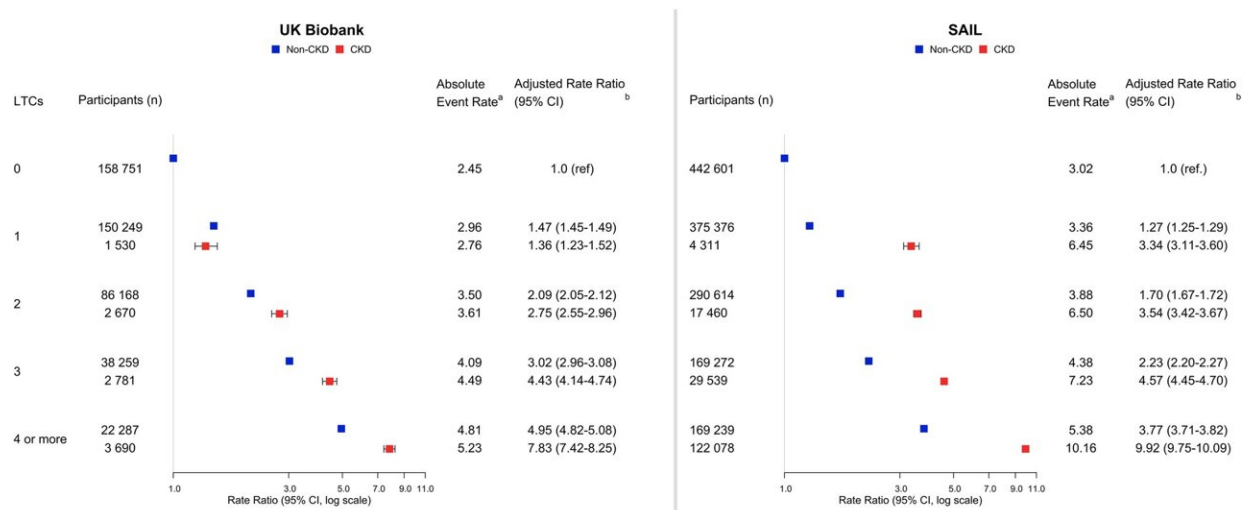


People with chronic kidney disease are vulnerable to hospitalisation

November 19 2021



Hospitalization events by chronic kidney disease (CKD) status and number of long-term conditions (LTCs). a indicates the following: events per 100 patient years. b indicates the following: adjusted for age, sex, deprivation status and smoking status. P values for all categories

Citation: People with chronic kidney disease are vulnerable to hospitalisation (2021, November 19) retrieved 20 November 2023 from <https://medicalxpress.com/news/2021-11-people-chronic-kidney-disease-vulnerable.html>

This document is subject to copyright. Apart from any fair dealing for the purpose of private study or research, no part may be reproduced without the written permission. The content is provided for information purposes only.