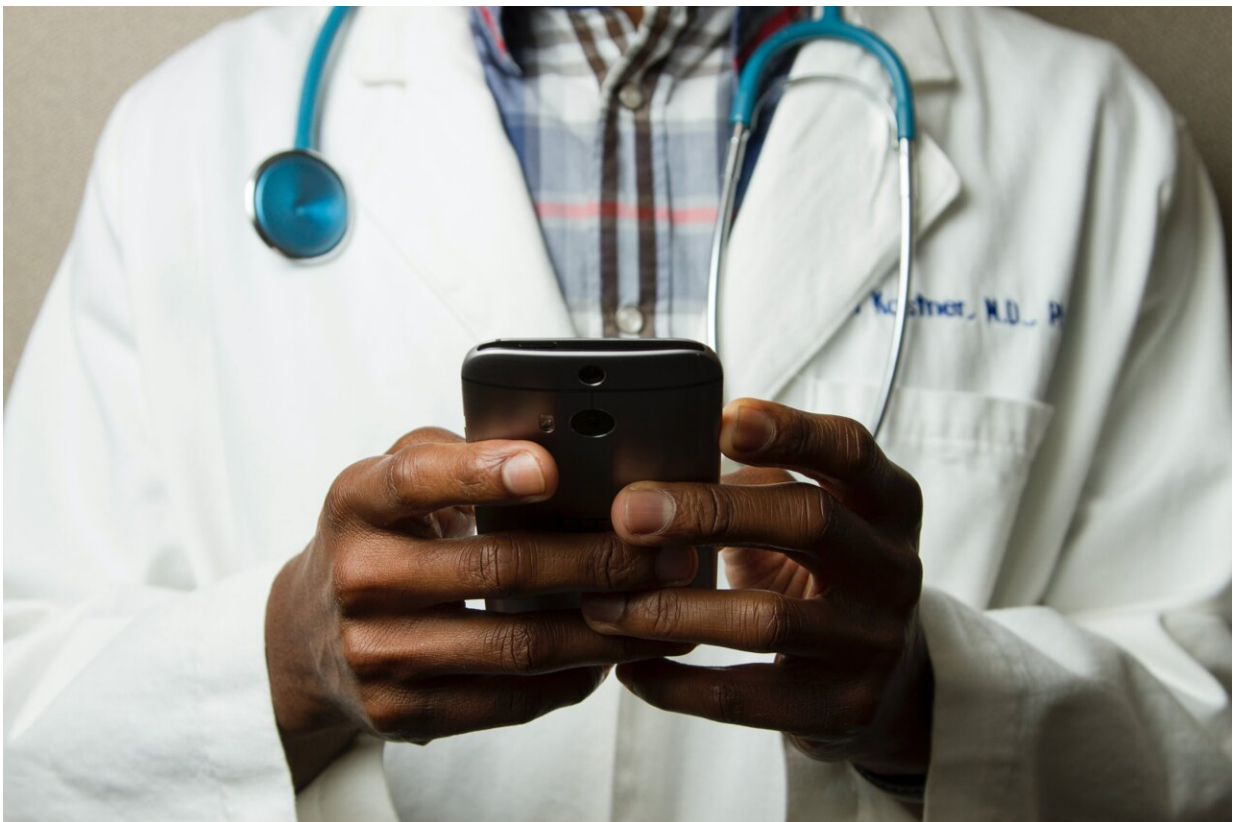


New digital tool could help youth experiencing mental health crises receive better hospital care

January 18 2022



Credit: Unsplash/CC0 Public Domain

Researchers in Nottingham are leading a new national study to help identify and prevent harmful consequences of mental health crisis in

children and young people admitted to hospitals

Nottingham Trent University is involved in the study, which is led by Dr. Joseph C Manning MBE, Clinical Associate Professor in Children and Young People's Nursing at Nottingham Children's Hospital and Centre for Children and Young People Health Research at University of Nottingham.

The study will evaluate the use of new technology designed in Nottingham to help staff in Emergency Departments and children's wards, to rapidly identify those at risk of self-harm or even suicide and put in measures to improve their safety.

The CYP-MH SAPHÉ digital tool enables rapid assessment of children and young people by staff working in Emergency Departments or in other acute hospital clinics and wards.

At NTU, Philip Breedon, professor of smart technologies in the School of Science and Technology, will support prototype development of the technology and dissemination of the project.

Dr. Joseph Manning said: "Every day in the NHS hundreds of children and young people who are experiencing mental [health](#) crisis are seen in Emergency Departments and over 300 are admitted for assessment and treatment. They are seen and treated by staff who are highly skilled and experienced in emergency and acute pediatric care, but who may not be trained in [mental health care](#).

"Our experience of working with young people, families and staff in Nottingham Children's Hospital has led to the development of the SAPHÉ digital tool to assess and prevent the immediate risk of self-harm. Being admitted to [hospital](#) can be a daunting experience for anyone. But for [young people](#) in mental health crisis, it is even more

important that staff can quickly and effectively assess the risks of more serious consequences occurring such as self-harm or suicidal thoughts.

"Over the next year we aim to evaluate whether this tool could be used more widely in other Emergency Departments and hospitals and what the impact might be on improving the care and treatment for [people](#) who are admitted to acute hospitals."

Provided by Nottingham Trent University

Citation: New digital tool could help youth experiencing mental health crises receive better hospital care (2022, January 18) retrieved 29 January 2023 from <https://medicalxpress.com/news/2022-01-digital-tool-youth-experiencing-mental.html>

<p>This document is subject to copyright. Apart from any fair dealing for the purpose of private study or research, no part may be reproduced without the written permission. The content is provided for information purposes only.</p>
--