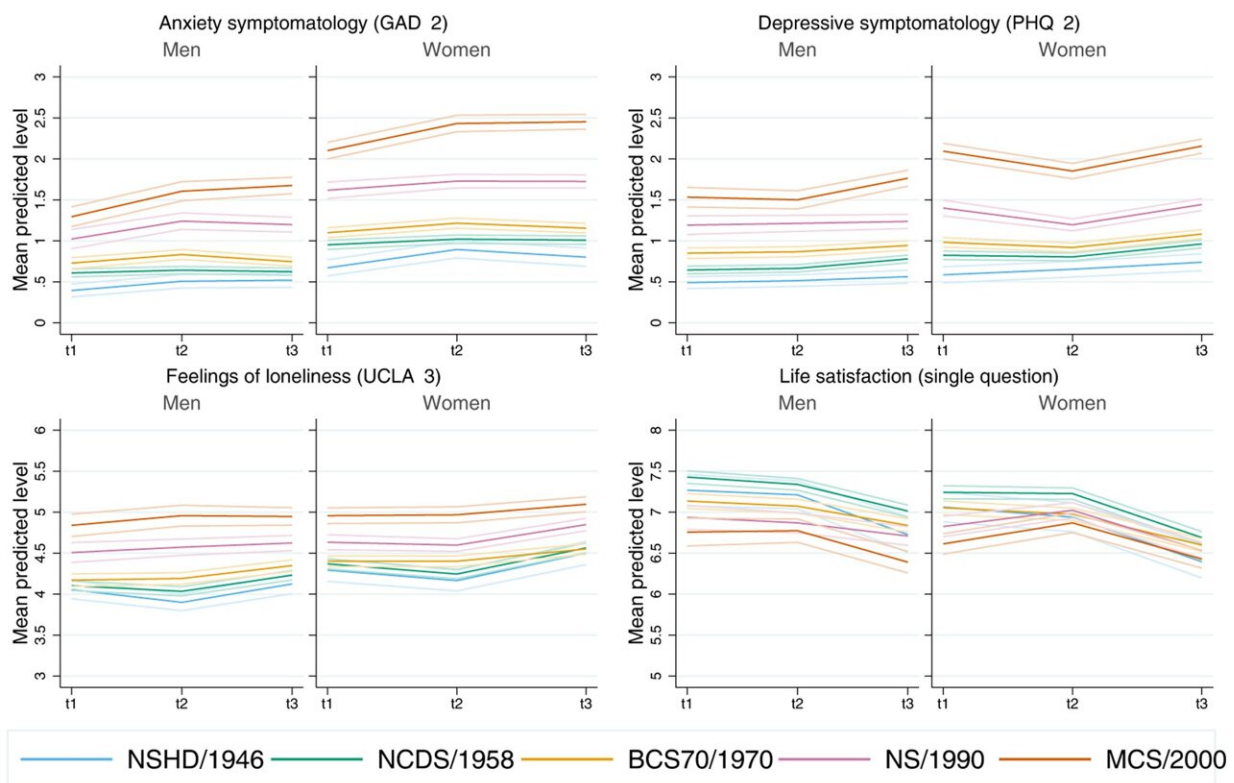


Generational inequalities in mental health accelerated during COVID-19 pandemic, suggests study

January 24 2023



Note: 95% confidence intervals are indicated in lighter shaded lines. t1: May 2020; t2: Sep/Oct 2020; t3: Feb/Mar 2021. BCS70: British Cohort Study; GAD 2: 2 item General Anxiety Disorder questionnaire; NCDS: National Child and Development Study; NS: Next Steps; NSHD: National Survey of Health and Development; MCS: Millennium Cohort Study; PHQ 2: 2 item Patient Health Questionnaire; UCLA 3: 3 item UCLA loneliness scale

Adjusted marginal mean estimates and 95% CIs estimated for each outcome at each time-point and cohort by birth sex. Models adjusted by highest qualification achieved; prospectively assessed pre-pandemic housing tenure, self-rated health, long-standing illness, psychological distress, and LS (LS only in models for that outcome); and household composition. Credit: *Psychological*

Core symptoms of anxiety and depression were more common among younger generations compared to older age groups during the COVID-19 outbreak—with the gap between young and old widening further during the pandemic, according to a new study by UCL and King's College London.

Published today in *Psychological Medicine*, the study explores data from 26,772 people living in the U.K. across five different birth cohort studies—following those born in 1946, 1958, 1970, 1989–90 and 2000–2002. Study members were asked how often they experienced common symptoms of depression and anxiety at three different points during the first year of the pandemic: May 2020, September/October 2020, and February/March 2021.

The study found that symptoms of depression in the first months of the pandemic were higher than anticipated among adults in their late teens and early twenties. This was found to be the case even considering the generational differences in mental ill health before the pandemic.

Study lead author, Dr. Darío Moreno-Agostino (UCL Center for Longitudinal Studies), said, "The overall number of people reporting common mental health problems has been rising for decades but this much sharper increase among [young people](#) is really unexpected. If we assumed that the gap in [mental ill health](#) between younger and [older people](#) stayed the same over time, we wouldn't have expected to see depression levels like those we found among the youngest generation for another 22 years."

The study also found that generational differences in anxiety levels

expanded during the first year of the pandemic. While overall symptoms of depression and anxiety rose across all generations during the first year of the pandemic, it was the more substantial increase in anxiety levels among younger adults that really widened the generational gap.

The researchers took into account other factors that might contribute to inequalities between generations, including the study members' prior health and socioeconomic circumstances, and their [psychological distress](#) and life satisfaction before the onset of the pandemic.

Across generations, women and those experiencing [financial difficulties](#) were found to be particularly vulnerable to mental health problems during the first year of the pandemic.

The researchers say that the results of their study highlight the continued relevance of measures to support the mental health of the most vulnerable groups across society.

More information: Darío Moreno-Agostino et al, Generational, sex, and socioeconomic inequalities in mental and social wellbeing during the COVID-19 pandemic: prospective longitudinal observational study of five UK cohorts, *Psychological Medicine* (2022). [DOI: 10.1017/S0033291722003348](#)

Provided by University College London

Citation: Generational inequalities in mental health accelerated during COVID-19 pandemic, suggests study (2023, January 24) retrieved 25 January 2023 from <https://medicalxpress.com/news/2023-01-generational-inequalities-mental-health-covid-.html>

This document is subject to copyright. Apart from any fair dealing for the purpose of private

study or research, no part may be reproduced without the written permission. The content is provided for information purposes only.