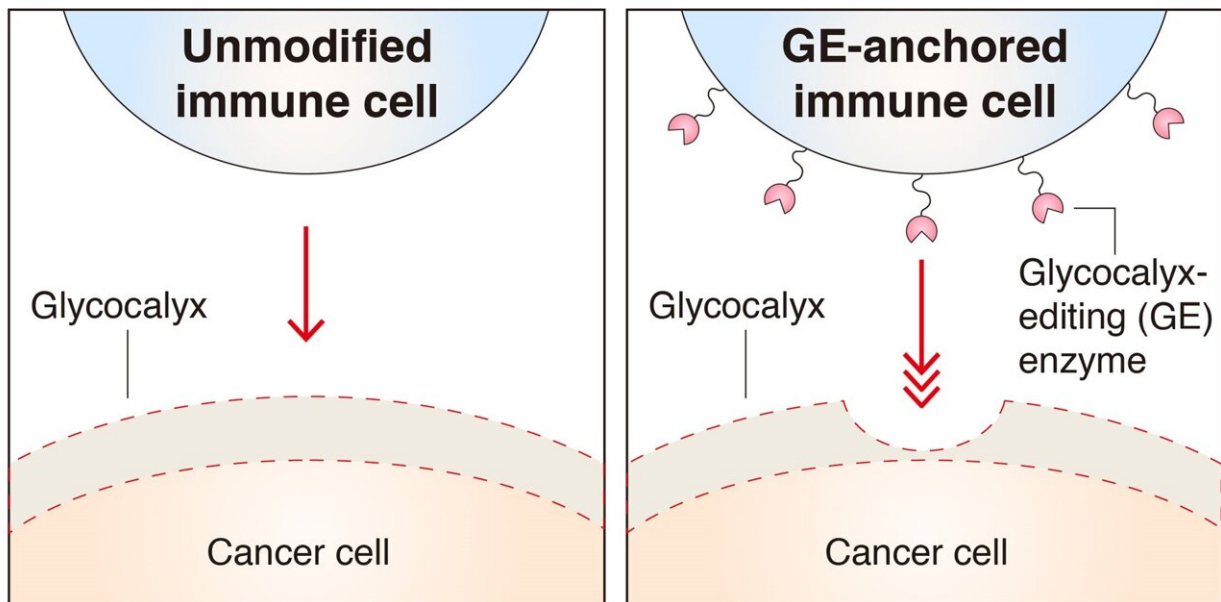


# Cancer cells with thicker glycolyx barrier are better at evading immune cells

March 27 2023



Researchers engineered immune cells (NK-92) to anchor glycolyx-editing (GE) enzymes on the surface. The modified immune cells were able to break through the glycolyx armor of cancer cells. Credit: Sangwoo Park, Cornell University

One of the ways that cancer cells hide from the body's immune system is by forming a thin surface barrier called the glycolyx. In a new study, researchers examined the material properties of this barrier with unprecedented resolution, revealing information that could help improve current cell-based cancer immunotherapies.

Cancer [cells](#) often form the glycocalyx with high levels of cell-surface mucins, which are thought to help protect the cancer cell from immune cell attack. However, a physical understanding of this barrier has remained limited, especially as it relates to cell-based cancer immunotherapies, which involve removing immune cells from a patient, modifying them to seek and destroy cancer, and then putting them back into the patient's body.

"We found that changes in the thickness of the barrier that were as small as 10 nanometers could affect the antitumor activity of our immune cells or the [engineered cells](#) used for immunotherapy," said Sangwoo Park, a graduate student in Matthew Paszek's Lab at Cornell University in Ithaca, New York. "We used this information to engineer immune cells that can get through the glycocalyx, and we hope this approach could be used to enhance current cell-based immunotherapies."

Park will present the findings at [Discover BMB](#), the annual meeting of the American Society for Biochemistry and Molecular Biology, March 25–28 in Seattle.

"Our lab has advanced a powerful strategy called scanning angle interference microscopy (SAIM) for measuring the nanoscale dimensions of the cancer cell glycocalyx," said Park. "This imaging technique allows us to understand the structural relationship of cancer-associated mucins to the biophysical properties of the glycocalyx."

The researchers generated a cellular model to precisely control the cell-surface mucin expression to mimic the cancer cell glycocalyx. They then combined SAIM with genetic approaches to study how the surface density, glycosylation and crosslinking of cancer-associated mucins affect the thickness of the barrier at the nanoscale. They also analyzed how the glycocalyx thickness affected a cell's resistance to attack by immune cells.

The study revealed that the thickness of [cancer cells](#)' glycocalyx is one of the major parameters determining immune cell evasion and that engineered immune cells worked better if the glycocalyx was thinner.

Based on this knowledge, the researchers engineered immune cells with special enzymes on their surface to allow them to attach to and interact with the glycocalyx. Experiments performed at the [cellular level](#) showed that these [immune cells](#) were able to overcome the glycocalyx armor of [cancer cells](#).

Next, the researchers plan to determine whether these findings can be replicated in the laboratory and, eventually, in clinical trials.

**More information:** Sangwoo Park will present this research during the Regulatory Glycosylation Spotlight Session from 2–3 p.m. PDT on Sunday, March 26, in Room 608 of the Seattle Convention Center.

Provided by American Society for Biochemistry and Molecular Biology

Citation: Cancer cells with thicker glycocalyx barrier are better at evading immune cells (2023, March 27) retrieved 4 July 2023 from <https://medicalxpress.com/news/2023-03-cancer-cells-thicker-glycocalyx-barrier.html>

<p>This document is subject to copyright. Apart from any fair dealing for the purpose of private study or research, no part may be reproduced without the written permission. The content is provided for information purposes only.</p>
--