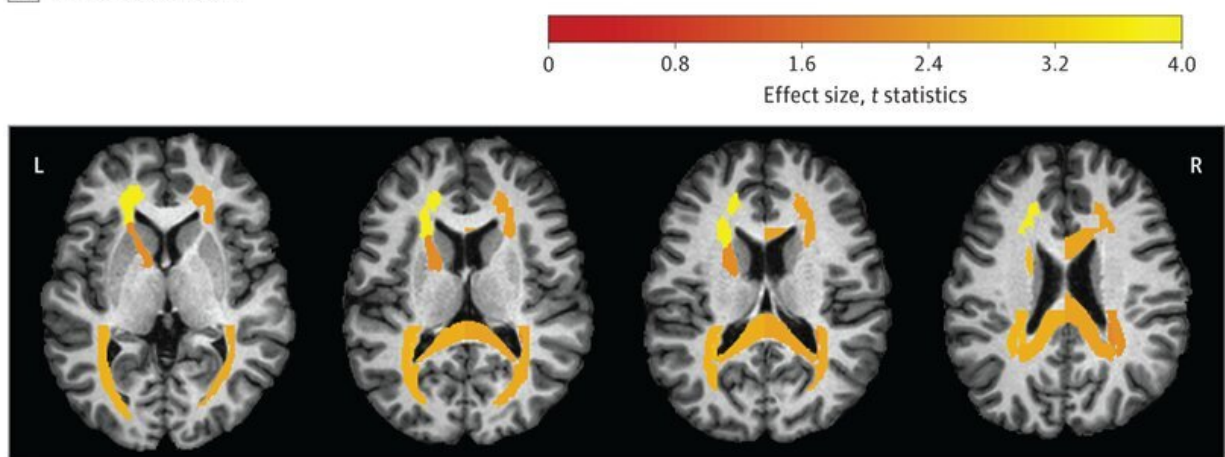


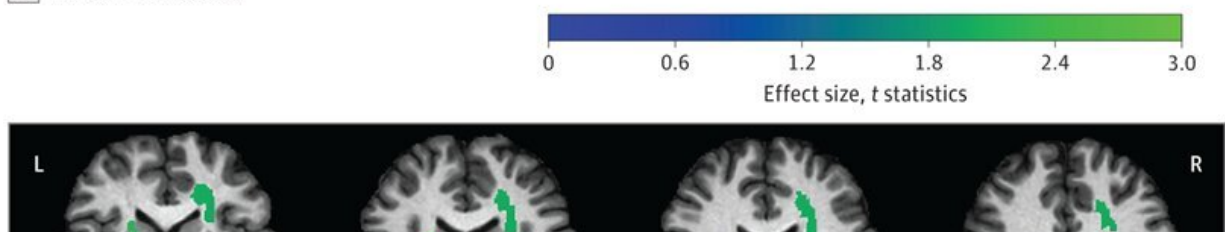
# Keeping a tighter rein on blood pressure in adults over 50 is desirable for brain health

April 24 2023, by Will Sansom

**A** White matter lesions



**B** Fractional anisotropy



Patterns of Changes in the Type III White Matter Parcellation Map–Derived Deep White Matter Regions of Interest When Comparing Intensive Treatment With Standard Treatment A, Changes in white matter lesions. B, Changes in diffusion tensor imaging (DTI) fractional anisotropy. C, Changes in DTI mean diffusivity. The red-yellow color scale indicates effect size; that is, smaller increase over time for intensive treatment compared with standard treatment. The blue-green color scale indicates effect size; that is, larger increase for intensive treatment compared with standard treatment. Changes are significant at

*P*

Citation: Keeping a tighter rein on blood pressure in adults over 50 is desirable for brain health (2023, April 24) retrieved 15 July 2023 from <https://medicalxpress.com/news/2023-04-tighter-rein-blood-pressure-adults.html>

This document is subject to copyright. Apart from any fair dealing for the purpose of private study or research, no part may be reproduced without the written permission. The content is provided for information purposes only.