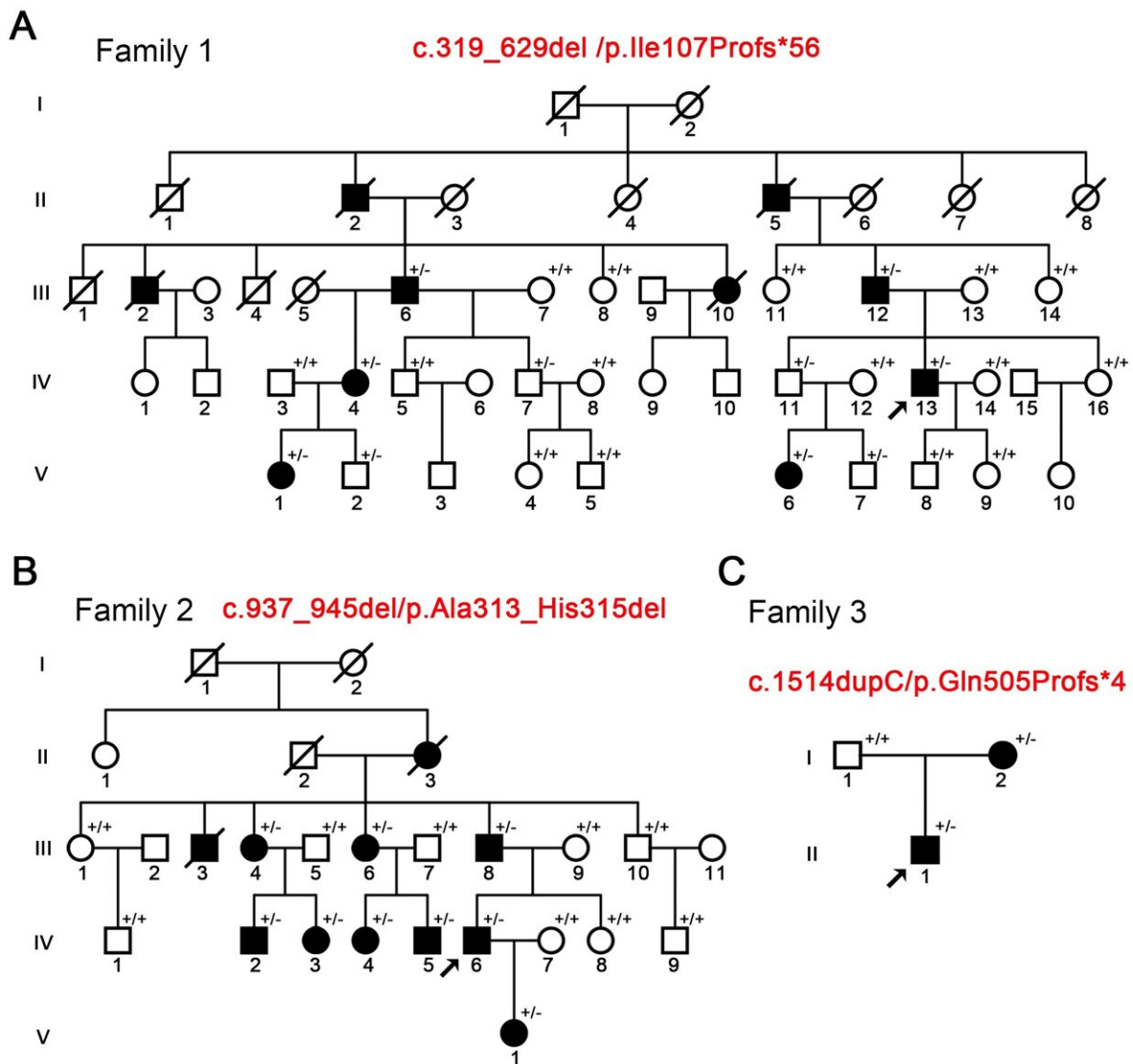


# Functional characterization of novel NPRL3 mutations identified in three families with focal epilepsy

June 15 2023

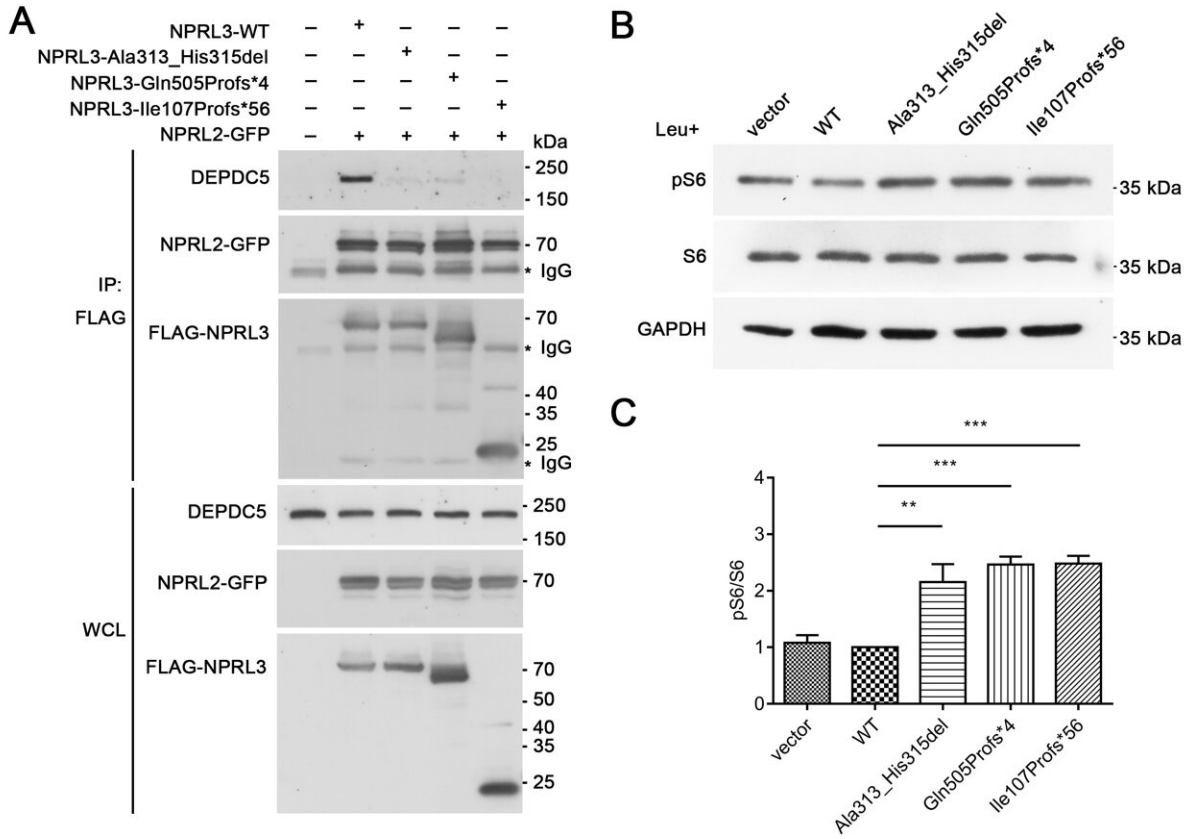


Identification of mutations in the NPRL3 gene in three pedigrees with focal epilepsy. Credit: Science China Press

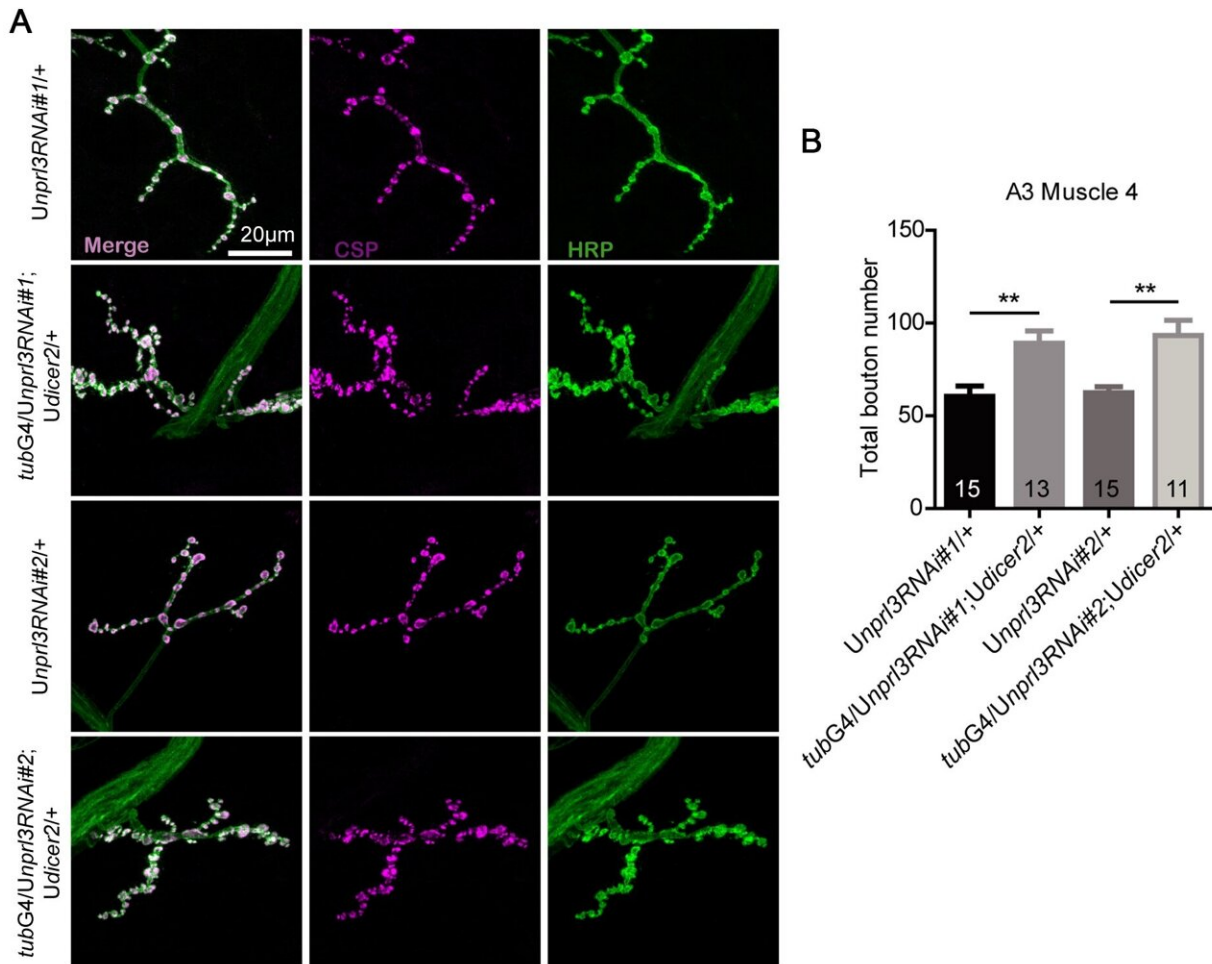
*Science China Life Sciences* recently reported on the research results of Tang Beisha's team from Xiangya Hospital of Central South University, Liu Jing Yu's team from the Institute of Neurology of the Chinese Academy of Sciences, and Zhang Luoying's team from Huazhong University of Science and Technology, including Du Shiyue, Zeng Sheng, and Song Li.

Epilepsy has a complex etiology with 80% owing a [genetic basis](#). A small portion of epilepsy is inherited in Mendelian mode. Exploring the causative genes and pathogenesis of epilepsy will improve the clinical understanding and facilitate precise medicine of epilepsy. GATOR1 which consists of DEPDC5, NPRL2 and NPRL3 protein and inhibits the pathway of mTORC1, was first identified to be related to genetic epilepsy in 2013. However, its pathogenic mechanism remains unclear.

Beisha Tang's team, collaborating with Jingyu Liu's team, collected three families of focal epilepsy. Using techniques including linkage analysis and whole exome sequencing, they identified three NPRL3 mutations in patients from these three families: c.319\_629del, c.937\_945del and c.1514dupC.



NPRL3 mutation impairs the formation of GATOR1 complex and its inhibitory effect on mTORC1 pathway. Credit: Science China Press



The number of synaptic boutons increased in nprl3 RNAi flies. Credit: Science China Press

The teams found that NPRL3 c.937\_945del, c.319\_629del and c.1514dupC mutants did not affect the formation of NPRL3-NPRL2 dimer, but the dimers formed by NPRL3 mutants lost the ability to bind to DEPDC5, and the formation of GATOR1 complex was seriously affected, thereby the inhibitory ability of mTORC1 pathway activity decreased.

This study also generated nprl3 RNA interference (RNAi) flies, and

epilepsy-like behavior was induced in the flies. Moreover, knocking down any component of the GATOR1 complex (nprl3, nprl2, and iml1) in [fruit flies](#) can cause epilepsy-like behavior, further supporting the contribution of GATOR1 signaling defects in epileptogenesis.

At the same time, this study also found that the number of synaptic boutons and the expression level of excitatory glutamate receptors increased in nprl3 RNAi flies. The results may be the pathological basis for epilepsy-like behavior, suggesting that NPRL3-associated [epilepsy](#) is a development-related disease.

**More information:** Shiyue Du et al, Functional characterization of novel NPRL3 mutations identified in three families with focal epilepsy, *Science China Life Sciences* (2023). [DOI: 10.1007/s11427-022-2313-1](https://doi.org/10.1007/s11427-022-2313-1)

Provided by Science China Press

Citation: Functional characterization of novel NPRL3 mutations identified in three families with focal epilepsy (2023, June 15) retrieved 18 July 2023 from <https://medicalxpress.com/news/2023-06-functional-characterization-nprl3-mutations-families.html>

<p>This document is subject to copyright. Apart from any fair dealing for the purpose of private study or research, no part may be reproduced without the written permission. The content is provided for information purposes only.</p>
--