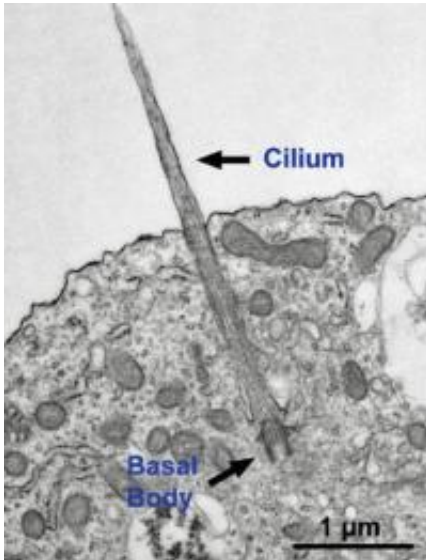


# Evolved, mutated gene module linked to Joubert syndrome

26 January 2012



This image using an electron microscope shows a cilium growing from a neuron. Credit: Gleeson lab, UC San Diego

A team led by researchers at the University of California, San Diego School of Medicine reports that newly discovered mutations in an evolved assembly of genes cause Joubert syndrome, a form of syndromic autism.

The findings are published in the January 26 online issue of [Science Express](#).

Joubert syndrome is a rare, recessive brain condition characterized by malformation or underdevelopment of the [cerebellum](#) and brainstem. The disease is due specifically to alterations in cellular primary cilia - antenna-like structures found on most cells. The consequence is a range of distinct physical and cognitive disabilities, including poor muscle control, and mental retardation. Up to 40 percent of Joubert syndrome patients meet clinical criteria for [autism](#), as well as other neurocognitive disorders, so it is

considered a syndromic form of autism.

The cause or causes of Joubert syndrome are not well-understood. Researchers looked at [mutations](#) in the TMEM216 gene, which had previously been linked to the syndrome. However, only half of the expected Joubert syndrome patients exhibit TMEM216 gene mutations; the other half did not. Using genomic sequencing, the research team, led by Joseph G. Gleeson, MD, professor of neurosciences and pediatrics at UC San Diego, broadened their inquiry and discovered a second culprit: mutations in a neighboring gene called TMEM138.

"It is extraordinarily rare for two adjacent [genes](#) to cause the same human disease," said Gleeson. "The mystery that emerged from this was whether these two adjacent, non-duplicated genes causing indistinguishable disease have functional connections at the gene or protein level."

Through evolutionary analysis, the scientists concluded that the two TMEM genes became joined end-to-end approximately 260 million years ago, about the time some amphibians began transitioning into land-based reptiles. The connected genes evolved in tandem, becoming regulated by the same transcription factors.

"Prior to this transition, the two genes had wildly different expression levels," said Jeong Ho Lee, MD, PhD, and first author of the study. "Following this transition, they became tightly co-regulated. Moreover, we found that the two encoded proteins coordinate delivery of factors key for cilia assembly."

Gleeson said the findings suggest the human genome has evolved to take advantage of fortuitous ancestral events like gene translocations to better coordinate gene expression by assembling into specific modules. When these modules are disrupted, however, neurodevelopmental diseases

may result.

Provided by University of California - San Diego

APA citation: Evolved, mutated gene module linked to Joubert syndrome (2012, January 26) retrieved 19 August 2022 from <https://medicalxpress.com/news/2012-01-evolved-mutated-gene-module-linked.html>

*This document is subject to copyright. Apart from any fair dealing for the purpose of private study or research, no part may be reproduced without the written permission. The content is provided for information purposes only.*