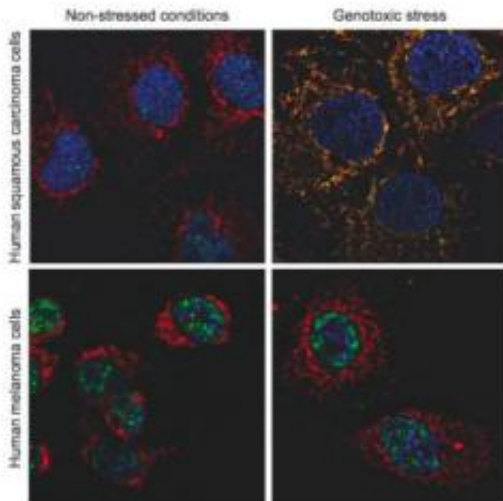


Scientists find molecular switch that allows melanoma to resist therapy

2 February 2012



Human squamous carcinoma cells exhibit ATF2 (green) located at mitochondria (red) after exposure to genotoxic stress, whereas ATF2 remains in the nucleus in human melanoma cell exposed to the same genotoxic stress. Nuclei are shown in blue. Credit: Ronai lab, Sanford-Burnham Medical Research Institute

The National Cancer Institute (NCI) estimates that as many as one in 51 men and women will be diagnosed with melanoma—the deadliest form of skin cancer—at some point during their lifetimes. A research team led by Ze'ev Ronai, Ph.D. at Sanford-Burnham Medical Research Institute (Sanford-Burnham) is working to unravel the molecular mechanisms underlying the development and progression of this disease in hopes of improving prevention and treatment strategies. To do this, Ronai's laboratory has been studying a protein named Activating Transcription Factor 2 (ATF2), which is associated with poor prognosis in melanoma.

ATF2 is a two-faced protein—in [melanoma](#) cells, it's oncogenic, or cancer-causing, while in non-malignant types of skin cancers, it acts as a tumor

suppressor. In a paper published February 3 in the journal *Cell*, the team identified a molecular switch that controls ATF2's dual functions. This switch is controlled by protein kinase C β (PKC β), which disables ATF2's tumor-suppressing activities, sensitizing cells to chemotherapy; instead, ATF2's tumor-promoting activity is enhanced. The team also found that high levels of PKC β in melanoma are associated with poor prognosis.

"PKC β is the culprit behind melanoma's 'oncogenic addiction,'" said Ronai, associate director of the Sanford-Burnham's NCI-designated Cancer Center and senior author of the study. "ATF2 is normally a 'good guy.' But when there is too much PKC β —as in malignant melanoma—ATF2 becomes an oncogene, promoting tumor development."

In this study, Ronai and lead author Eric Lau, Ph.D., a postdoctoral researcher in his lab, found that PKC β 's malignant power is in its ability to direct ATF2's location and activity within a cell. In a normal cell, PKC β modifies ATF2, keeping it in the nucleus, where it turns genes on and off and helps repair damaged DNA. When the cell experiences exposure to toxicity or stress (radiation, for example), PKC β backs off and ATF2 is able to move out of the nucleus and to the mitochondria, the part of the cell that generates energy and helps control cellular life and death. When it gets there, ATF2 helps to set the cell on a death course—a safeguard cells use to prevent errors that often make them cancerous.

PKC β levels are abnormally high in melanoma, and more PKC β means more ATF2 stuck in the nucleus, where it can't help the cells to die. Instead, in the nucleus, ATF2 promotes cellular survival and thus contributes to tumor development.

"We found that melanoma patients with high PKC β levels in their primary tumors were more likely to experience shorter survival times," said Lau. "This finding is consistent with earlier analyses of human

melanoma tumors that showed a similar correlation between increased nuclear ATF2 and poor clinical outcome."

The Ronai laboratory, in collaboration with Sanford-Burnham's Conrad Prebys Center for Chemical Genomics, is currently searching for small molecules that help release ATF2 from PKC?'s grip, thereby resuming ATF2's ability to promote cell death when needed. Since such an approach will effectively kill melanoma [cells](#), it is expected to offer new therapeutic options for melanoma, and possibly other tumors with high PKC? levels.

"This work has clear potential for translation from a basic laboratory discovery to a melanoma therapy," said Michael Jackson, Ph.D., vice president of drug discovery and development at Sanford-Burnham. "We are excited to begin the screening process to identify a new class of drugs to treat cancer."

Provided by Sanford-Burnham Medical Research Institute

APA citation: Scientists find molecular switch that allows melanoma to resist therapy (2012, February 2) retrieved 25 June 2022 from <https://medicalxpress.com/news/2012-02-scientists-molecular-melanoma-resist-therapy.html>

This document is subject to copyright. Apart from any fair dealing for the purpose of private study or research, no part may be reproduced without the written permission. The content is provided for information purposes only.