

# Diabetes linked to increased cause-specific mortality

June 21 2012

---

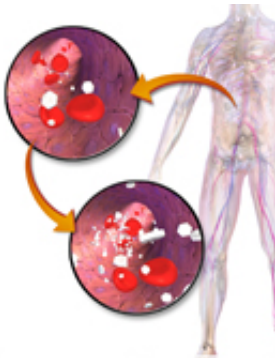


Image courtesy of Blausen Medical

Diabetes is linked with a significantly increased risk of death from many diseases, including specific cancers, in both men and women, according to a study published online June 14 in *Diabetes Care*.

(HealthDay) -- Diabetes is linked with a significantly increased risk of death from many diseases, including specific cancers, in both men and women, according to a study published online June 14 in *Diabetes Care*.

Peter T. Campbell, Ph.D., of the [American Cancer Society](#) National Home Office in Atlanta, and colleagues conducted a [prospective cohort study](#) involving 1,053,831 adults in the United States enrolled in the Cancer Prevention Study-II who were followed for up to 26 years. Participants completed a self-administered questionnaire at baseline, and the association of diabetes with cause-specific mortality was assessed.

The researchers found that women and men with diabetes had an increased risk of all-cause mortality, after controlling for age, [body mass index](#), and other variables (relative risk [RR], 1.90 and 1.73, respectively). Diabetes correlated with increased risk of death from cancers of the liver (RR, 1.40), pancreas (RR, 1.31), endometrium (RR, 1.33), colon (RR, 1.18), and breast (RR, 1.16) for women. For men there was an increased risk of death from cancers of the breast (RR, 4.20), liver (2.26), oral cavity and pharynx (RR, 1.44), pancreas (RR, 1.40), bladder (RR, 1.22), and colon (RR, 1.15). There was an inverse association with prostate cancer (RR, 0.88). Diabetes correlated with increased mortality linked to the circulatory system, respiratory system, digestive system, genitourinary system, and accidental deaths/external causes.

"In conclusion, the broad range of deaths associated with diabetes in this study reflect the extensive nature of the disease," the authors write.

"These findings support the need for coordinated, multidisciplinary care of men and women with diabetes, including age-appropriate [cancer screening](#) and early detection."

**More information:** [Abstract](#)

[Full Text \(subscription or payment may be required\)](#)

Copyright © 2012 [HealthDay](#). All rights reserved.

Citation: Diabetes linked to increased cause-specific mortality (2012, June 21) retrieved 16 December 2022 from <https://medicalxpress.com/news/2012-06-diabetes-linked-cause-specific-mortality.html>

<p>This document is subject to copyright. Apart from any fair dealing for the purpose of private study or research, no part may be reproduced without the written permission. The content is provided for information purposes only.</p>
--