

R-CHOP benefits older mantle-cell lymphoma patients

9 August 2012

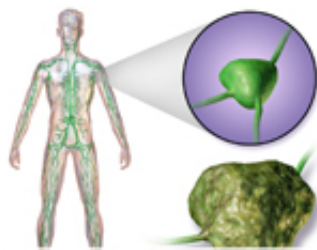


Image courtesy of Blausen Medical

In older patients with mantle-cell lymphoma, a rituximab-based chemotherapy regimen (rituximab, cyclophosphamide, doxorubicin, vincristine, and prednisone) followed by maintenance therapy with rituximab improves survival, according to a study published in the Aug. 9 issue of the *New England Journal of Medicine*.

(HealthDay) -- In older patients with mantle-cell lymphoma, a rituximab-based chemotherapy regimen (rituximab, cyclophosphamide, doxorubicin, vincristine, and prednisone [R-CHOP]) followed by maintenance therapy with rituximab improves survival, according to a study published in the Aug. 9 issue of the *New England Journal of Medicine*.

Hanneke C. Kluin-Nelemans, M.D., Ph.D., from the University Medical Center Groningen in the Netherlands, and colleagues randomly assigned 560 patients (age 60 years and older; median age, 70 years) with mantle-cell lymphoma to six cycles of rituximab, fludarabine, and cyclophosphamide (R-FC) every 28 days or to eight cycles of R-CHOP every 21 days. Patients who responded were further randomized to maintenance treatment with rituximab or interferon alfa.

The researchers found that the R-FC and R-CHOP groups had similar complete remission rates (40 and 34 percent, respectively; $P = 0.1$). However, with R-FC there was more frequent progressive

disease (14 versus 5 percent), a significantly lower four-year survival rate (47 versus 62 percent), and more patients died during the first remission (10 versus 4 percent). The frequency of grade 3 and 4 infections was balanced, and hematologic adverse effects were more frequent with R-FC than R-CHOP. For [maintenance therapy](#), rituximab significantly reduced the risk of progression or death (hazard ratio, 0.55) and significantly improved four-year survival, compared with interferon-alfa, in patients who had responded to R-CHOP (87 versus 63 percent).

"R-CHOP induction followed by maintenance therapy with rituximab is effective for older patients with mantle-cell lymphoma," Kluin-Nelemans and colleagues conclude.

The study was partially supported by [Roche Pharmaceuticals](#), Bayer Schering Pharma, and Schering-Plough; several authors disclosed [financial ties](#) to these and other pharmaceutical companies.

More information: [Full Text \(subscription or payment may be required\)](#)

Copyright © 2012 [HealthDay](#). All rights reserved.

APA citation: R-CHOP benefits older mantle-cell lymphoma patients (2012, August 9) retrieved 25 September 2022 from <https://medicalxpress.com/news/2012-08-r-chop-benefits-older-mantle-cell-lymphoma.html>

This document is subject to copyright. Apart from any fair dealing for the purpose of private study or research, no part may be reproduced without the written permission. The content is provided for information purposes only.