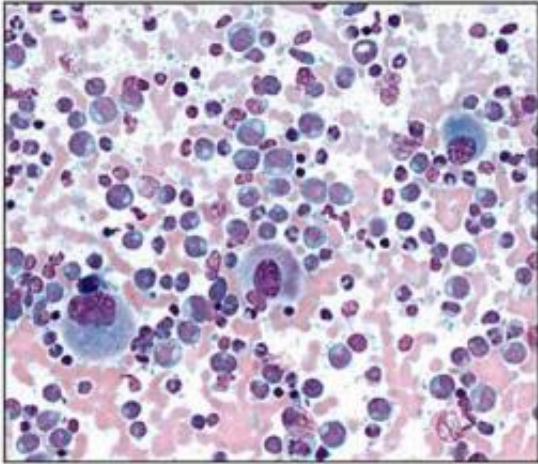


Drug targets hard-to-reach leukemia stem cells responsible for relapses

17 January 2013



Chronic myeloid leukemia leads to production of many abnormal white blood cells, which do not fight infection as well as normal white blood cells. As these abnormal cells accumulate in blood and bone marrow, they crowd out healthy white blood cells, red blood cells and platelets, impairing normal functions. Credit: UC San Diego School of Medicine

Researchers at the University of California, San Diego School of Medicine have discovered that hard-to-reach, drug-resistant leukemia stem cells (LSCs) that overexpress multiple pro-survival protein forms are sensitive – and thus vulnerable – to a novel cancer stem cell-targeting drug currently under development.

The findings, published in the January 17 online issue of *Cell Stem Cell*, open the possibility that diseases like [chronic myeloid leukemia](#) (CML) and some solid tumor cancers might – in combination with other therapies – be more effectively treated with this drug, and with a lower chance of relapse.

Led by principal investigator Catriona H. M. Jamieson, MD, PhD, associate professor of medicine and director of [stem cell research](#) at UC San Diego Moores Cancer Center, the researchers

found that a compound called sabutoclax appears to selectively target LSCs that express particular protein isoforms through alternatively splicing, a fundamental process in which a gene is able to code for multiple proteins.

An emerging class of drugs called [tyrosine kinase inhibitors](#) (TKI) – such as imatinib (Gleevec), gifitinib (Iressa) and sunitinib ([Sutent](#)) – has become a popular anti-cancer treatment. However, current TKIs are not 100 percent effective. In cases of CML, for example, some LSCs tucked protectively within bone marrow elude destruction, develop resistance to therapy, self-renew and eventually cause the leukemia to dramatically return.

Jamieson and colleagues found that alternative splicing of BCL2 genes, which code for proteins involved in apoptosis or [programmed cell death](#), specifically promoted [malignant transformation](#) of dormant white blood cell precursors into "blast crisis" LSCs. The blast crisis is the final phase of CML when overabundant, abnormal [white blood cells](#) crowd out healthy cells, causing serious dysfunction.

Of clinical importance, they noted that sabutoclax, which suppresses all BCL2 anti-apoptotic proteins, renders these marrow-dwelling blast crisis LSCs sensitive – and more susceptible – to TKI-based therapeutics at doses that do not harm normal progenitor cells.

"Our findings show that pan-BCL2 inhibition will be critical for the eradication of cancer stem cells in CML and that there is an essential link between cancer stem cell dormancy, pro-survival BCL2 isoform expression and therapeutic resistance," Jamieson said. "By using a novel pan-BCL2 inhibitor, we may be able to prevent therapeutic resistance by sensitizing malignant stem cell clones to TKIs."

The findings may have implications for treating

solid tumor cancers, such as colon, prostate, breast, and brain cancers, noted Daniel J. Goff, the study's first author.

"With many of these tumor types being shown to harbor cancer stem cells, it raises the question of whether BCL2 family expression as well as isoform-switching may be crucial for the maintenance of cancer [stem cells](#) in these diseases as well," he said. "If so, they may also be candidates for treatment with a BCL2 inhibitor like sabutoclax."

Provided by University of California - San Diego

APA citation: Drug targets hard-to-reach leukemia stem cells responsible for relapses (2013, January 17) retrieved 7 May 2021 from <https://medicalxpress.com/news/2013-01-drug-hard-to-reach-leukemia-stem-cells.html>

This document is subject to copyright. Apart from any fair dealing for the purpose of private study or research, no part may be reproduced without the written permission. The content is provided for information purposes only.