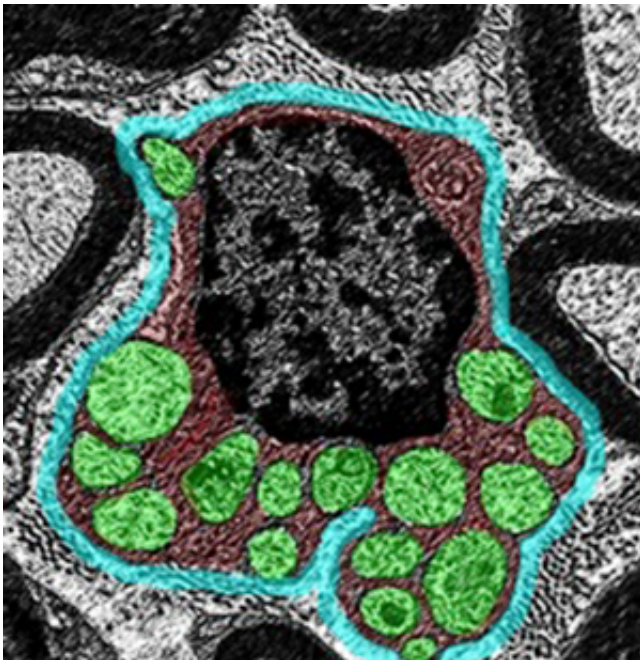


New clues to causes of peripheral nerve damage

March 7 2013, by Caroline Arbanas



New research suggests that damage to cellular energy factories in Schwann cells, which support neurons, may play a key role in peripheral neuropathies. A Schwann cell above surrounds nerve axons, shown in green. Credit: Bogdan Beirowski, Washington University

(Medical Xpress)—Anyone whose hand or foot has "fallen asleep" has an idea of the numbness and tingling often experienced by people with peripheral nerve damage. The condition also can cause a range of other symptoms, including unrelenting pain, stinging, burning, itching and sensitivity to touch.

Although peripheral neuropathies afflict some 20 million Americans, their underlying causes are not completely understood. Much research has focused on the breakdown of cellular energy factories in nerve cells as a contributing factor.

Now, new research at Washington University School of Medicine in St. Louis points to a more central role in damage to energy factories in other cells: Schwann cells, which grow alongside neurons and enable nerve signals to travel from the spinal cord to the tips of the fingers and toes.

The finding may lead to new [therapeutic strategies](#) to more effectively treat symptoms of this highly variable disorder, the scientists report March 6 in the journal *Neuron*.

"We found that a [toxic substance](#) builds up in Schwann cells that have disabled energy factories, leading to the same kind of nerve damage seen in patients with neuropathies," says senior author Jeffrey Milbrandt, MD, PhD, the James S. McDonnell Professor of Genetics and head of the Department of Genetics. "Now, we're evaluating whether drugs can block the buildup of that toxin, which could lead to a new treatment for the condition."

The most common cause of [peripheral neuropathy](#) is diabetes, which accounts for about half of all cases. The condition also can occur in [cancer patients](#) treated with chemotherapy, which can damage nerves.

In the body, Schwann cells wrap tightly around [nerve axons](#), the fibers that relay [nerve signals](#). Graduate student and first author Andreu Viader and colleagues in Milbrandt's lab studied Schwann cells in mice with genetically disabled mitochondria, or [cellular energy](#) factories. Under normal conditions, these mitochondria produce fuel and intermediates of energy metabolism that allow [nerve cells](#) to function.

The researchers showed that the crippled mitochondria activated a stress response in the Schwann cells. Instead of synthesizing fatty acids, a key component of Schwann cells, the cells burned fatty acids for fuel.

Over time, inefficient burning of fatty acids by the crippled mitochondria leads to a build up of acylcarnitines, a toxic substance, in the Schwann cells. The researchers found levels of acylcarnitines up to 100-fold higher in these mutant Schwann cells than in healthy Schwann cells.

And the bad news doesn't end there. Eventually, the toxin leaks out of the Schwann cells and onto the nerve axons. Studying neurons in petri dishes, the researchers showed that acylcarnitines damage nerve axons and disrupt the ability of nerves to relay signals.

"The toxin leaking out of the Schwann cells and onto the adjacent nerve axons causes damage that results in pain, numbness, tingling and other symptoms," Milbrandt says.

"We think that is a likely mechanism to explain the degeneration of axons that is known to occur in peripheral neuropathies."

The new research suggests that drugs that inhibit the buildup of acylcarnitines may block axonal degeneration. Milbrandt and his team now are evaluating the drugs in mice with disabled [Schwann cells](#) to see if they can slow or alleviate the decay of axons.

More information: Viader, A. et al. Aberrant Schwann cell lipid metabolism linked to mitochondrial deficits leads to axon degeneration and neuropathy. *Neuron*. March 6, 2013.

Provided by Washington University School of Medicine in St. Louis

Citation: New clues to causes of peripheral nerve damage (2013, March 7) retrieved 25
December 2022 from <https://medicalxpress.com/news/2013-03-clues-peripheral-nerve.html>

This document is subject to copyright. Apart from any fair dealing for the purpose of private study or research, no part may be reproduced without the written permission. The content is provided for information purposes only.