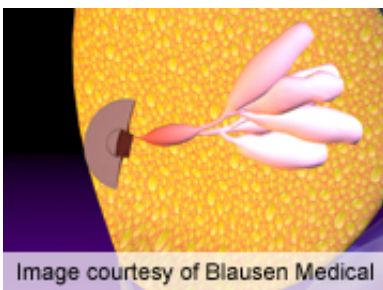


Breast CA nodal mets more common with certain mutations

July 25 2013



Lymph node metastases are more common in breast cancers with mutations in a cellular signaling pathway associated with growth, according to a study published online July 24 in *JAMA Surgery*.

(HealthDay)—Lymph node metastases are more common in breast cancers with mutations in a cellular signaling pathway associated with growth, according to a study published online July 24 in *JAMA Surgery*.

Cory A. Donovan, M.D., from the Oregon Health & Science University in Portland, and colleagues analyzed 30 invasive ductal breast cancers (stages IA through IIIB) for mutations in the *AKT1*, *HRAS*, and *PIK3CA* genes in [breast cancer](#) stem and progenitor cells and their association with various demographic and clinical factors.

The researchers found that 10 tumors had mutations. The presence of lymph node [metastases](#) was significantly more common when [mutations](#)

were present (90 versus 20 percent).

"Tumors in which breast cancer stem and progenitor cells have defects in PI3K/Akt signaling are significantly more likely to manifest nodal metastases," Donovan and colleagues conclude. "These oncogenic defects may be missed by gross molecular testing of the tumor and are markers of more aggressive breast cancer."

More information: [Abstract](#)
[Full Text \(subscription or payment may be required\)](#)

[Health News](#) Copyright © 2013 [HealthDay](#). All rights reserved.

Citation: Breast CA nodal mets more common with certain mutations (2013, July 25) retrieved 31 January 2023 from <https://medicalxpress.com/news/2013-07-breast-ca-nodal-mets-common.html>

<p>This document is subject to copyright. Apart from any fair dealing for the purpose of private study or research, no part may be reproduced without the written permission. The content is provided for information purposes only.</p>
--