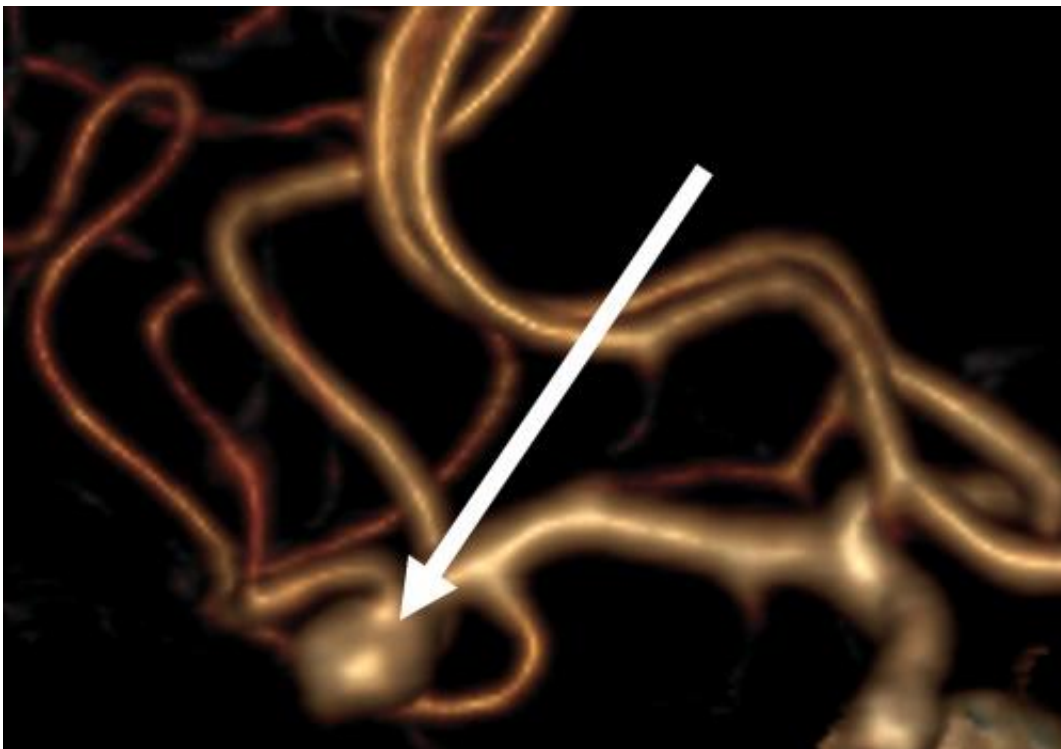


Hypertensive smoking women have an exceptionally high risk of a fatal brain bleeding

September 9 2013



This picture shows: A middle cerebral artery bifurcation aneurysm. Credit: Miikka Korja

Subarachnoid haemorrhage (SAH) is one of the most devastating cerebrovascular catastrophes causing death in 40 to 50% of the cases. The most common cause of SAH is a rupture of an intracranial

aneurysm. If the aneurysm is found, it can be treated before the possible rupture. However, some intracranial aneurysms will never rupture – the problem is that the doctors don't know which aneurysms will and which will not. So, they don't know which patients should be treated and who can safely be left untreated.

A long-term, population-based Finnish study on SAH, which is based on the FINRISK health examination surveys, and published in *PLOS ONE* on 9th September, shows that the risk of SAH depends strongly on the combination of certain [risk factors](#). The SAH incidence was shown to vary from 8 up to 171 per 100 000 person-years, depending on whether people had multiple risk factors for SAH – such as smoking, hypertension and female sex – or not.

Such an extreme risk factor -dependent variation in the incidence of any cardiovascular disease is exceptional, and may have significant [clinical implications](#), says one of the main authors, Associate Professor Miikka Korja from the Helsinki University Central Hospital and Australian School of Advanced Medicine.

If [smoking women](#) with high [systolic blood pressure](#) values have 20 times higher rate of these brain bleeds than never-smoking men with [low blood pressure](#) values, it may very well be that these women diagnosed with unruptured intracranial aneurysms should be treated. On the other hand, never-smoking men with low blood pressure values and intracranial aneurysms may not need to be treated at all.

In this largest SAH risk factor study ever, the study group also identified three new risk factors for SAH: previous [myocardial infarction](#), history of stroke in mother, and elevated [cholesterol levels](#) in men. The results revise the understanding of the epidemiology of SAH and indicate that the risk factors for SAH appear to be similar to those for other cardiovascular diseases.

We have previously shown that lifestyle risk factors affect significantly the life expectancy of SAH survivors, and now we have shown that the same risk factors also affect dramatically the risk of SAH itself. Thus, it appears quite clear that especially smoking cessation and hypertension treatment are important in preventing SAH and increasing life expectancy after SAH, clarifies one of the study group members, Academy Professor Jaakko Kaprio, from the University of Helsinki and National Institute for Health and Welfare, referring to their previous publication on cause-specific mortality on SAH survivors (Korja et al., *Neurology*, 2013).

The study group members have previously published also the largest twin study to date, confirming that heritability for SAH is very low (Korja et al., *Stroke*, 2010), and the first study on the incidence of SAH in type 1 diabetes, showing that the rate of non-aneurysmal SAHs in type 1 diabetes is unusually high (Korja et al., *Diabetes Care*, 2013).

Many of the previous studies on the epidemiology of SAH have relied on retrospective and single-center databases, which are unfortunately not very reliable data sources. Due to the unique health care system and common academic interest among doctors in Nordic countries, it has been possible to conduct high-quality and unbiased studies on SAH. We hope that our studies truly help doctors and patients, and are not only of interest in coffee tables on university campuses, says neurosurgeon Korja, and rushes to continue his working day in the operation room in Macquarie University Hospital, Sydney, which is one of his current appointments.

More information: [dx.plos.org/10.1371/journal.pone.0073760](https://doi.org/10.1371/journal.pone.0073760)

Provided by University of Helsinki

Citation: Hypertensive smoking women have an exceptionally high risk of a fatal brain bleeding (2013, September 9) retrieved 3 July 2023 from <https://medicalxpress.com/news/2013-09-hypertensive-women-exceptionally-high-fatal.html>

This document is subject to copyright. Apart from any fair dealing for the purpose of private study or research, no part may be reproduced without the written permission. The content is provided for information purposes only.