

# Team unearths roots of neural branching

24 January 2014, by Leah Burrows



Credit: Photo/iStock.com

(Medical Xpress)—Understanding how neurons grow, connect and change throughout life may be the Holy Grail in treating many neurological disorders, including autism and epilepsy.

Suzanne Paradis, assistant professor of biology, and her lab recently uncovered one more clue in that quest for understanding.

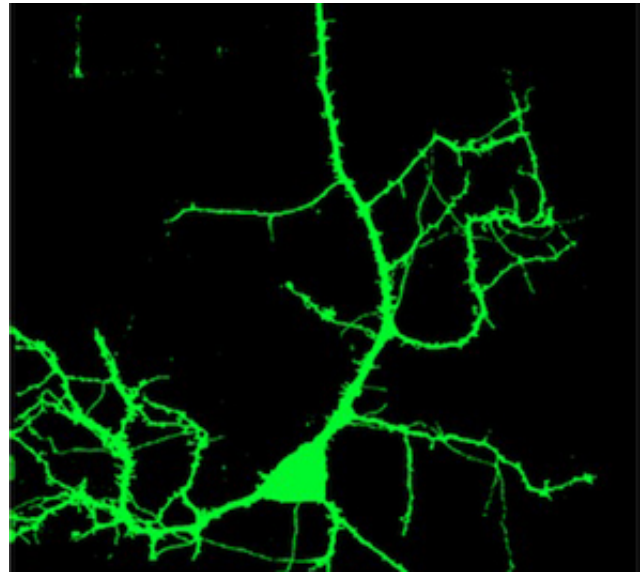
The Paradis lab reported in the *Journal of Neuroscience* the discovery of a new signaling molecule, called Rem2, that restricts neuronal growth, or dendritic branching, in response to [environmental stimuli](#). It is one of the first negative regulators of activity-dependent branching to be studied in vivo.

Dendrites are the primary sites where synaptic connections are formed between [neurons](#), enabling them to communicate. Dendrites are highly branched and complex structures, and the shape of a given neuron's [dendrites](#) is known as the dendritic arbor.

These arbors change and grow as we learn, develop memories and respond to other stimuli. The dendritic arbor needs to be highly regulated, since unchecked growth can lead to epilepsy, and too little or no growth can result in autism.

PhD candidate Amy Ghiretti led the team that

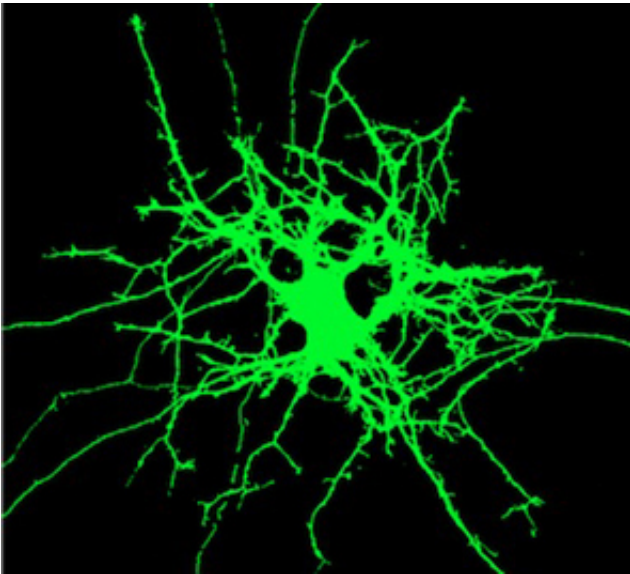
studied Rem2 in live tadpoles. By exposing the tadpoles to a bright light stimulus, Ghiretti was able to chart dendritic growth in the presence and absence of Rem2.



Neural branching with normal REM2

At normal levels of Rem2, dendritic branching increased in response to light, as expected, since the tadpoles were reacting to a stimulus. However, when Rem2 levels were decreased, neurons grew out of control—at a rate up to two and a half times the normal response to light. When Rem2 was expressed beyond normal levels, the neurons showed little or no increased branching in response to the light.

Dendrites must be able to respond to environmental changes to maintain a stable neural network, Ghiretti says. A shift in the balance of the molecules, like Rem2, that regulate the dendritic arbor—causing too many or too few branches, and thus changing the connections a neuron is able to make—may be a root cause of some neurological disorders.



Neural branching with REM2 decreased

"Rem2 is a new player in understanding the shape and branching of neurons," Ghiretti says. "It's a small piece of the puzzle but it may help us understand underlying causes of neurological disorders."

Provided by Brandeis University

APA citation: Team unearths roots of neural branching (2014, January 24) retrieved 24 July 2022 from <https://medicalxpress.com/news/2014-01-team-unearths-roots-neural.html>

*This document is subject to copyright. Apart from any fair dealing for the purpose of private study or research, no part may be reproduced without the written permission. The content is provided for information purposes only.*