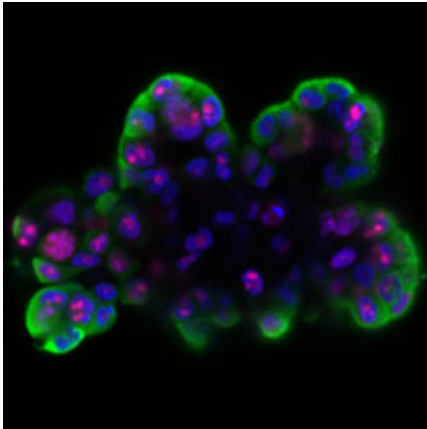


# New prostate cancer drugs may not be targeting root cause of disease, scientists warn

27 January 2014



Differentiated prostate cancer cells.

(Medical Xpress)—New drugs being developed for the treatment of prostate cancer may not be targeting the root cause of the disease, according to research published today (Friday, 24 January 2014) in *Cell Death & Differentiation*.

Scientists at the University of York have discovered that a process called 'methylation', previously thought to drive the development of cancer, occurs in cells that are already cancerous. The findings mean therapies aimed at reversing this process might not be effective against cancer [stem cells](#), allowing the cancer to return.

The work, carried out by Dr Davide Pellacani, a member of Professor Norman Maitland's team at the YCR Cancer Research Unit at the University's Department of Biology, and funded by Yorkshire Cancer Research and the Grand Masonic Charity, reveals a major difference between the cells normally treated in cancer and the underlying 'stem' cells.

Dr Pellacani said: "To develop cancer, certain

proteins found in healthy cells need to be switched off. Sometimes this is caused by methylation - a process where DNA is changed to block instructions for making a specific protein.

"There are obvious differences in the methylation of genes in [prostate cancer cells](#) and non-cancer cells. This previously suggested that the process could be driving the progression of cancer, and that this could be reversed by using specific drugs, but our research has suggested that this may not be the case."

Prostate cancer is made up of two types of cell; rare basal cells, including stem cells, from which the tumour is formed, and luminal cells, which form the tumour mass.

The team found that a change from basal to luminal cells – a process called differentiation – is strongly linked to the methylation difference, suggesting that the methylation in prostate cancer cells is not the primary driving force for the cancer.

Dr Pellacani continued: "There are clear implications for the effectiveness of new drugs currently being developed to change the methylation pattern in cancers. At the moment we only treat a proportion of the cells. By breaking the cancer down into its component cell types, we get insights into why cancers come back after treatment. Only by treating all the cells in a cancer will we approach long term [treatment](#) or even cure."

Professor Maitland and his team at the YCR Cancer Research Unit achieved international recognition in 2005 when they were the first to identify prostate [cancer](#) stem cells, which are believed to be the 'root cause' of [prostate cancer](#). The team, now supported by a £2.15m award from Yorkshire Cancer Research, has since explored the

exact molecular properties that allow these cells to spread, survive and resist aggressive treatments such as radiation and chemotherapy.

Provided by University of York

APA citation: New prostate cancer drugs may not be targeting root cause of disease, scientists warn (2014, January 27) retrieved 8 May 2021 from <https://medicalxpress.com/news/2014-01-prostate-cancer-drugs-root-disease.html>

*This document is subject to copyright. Apart from any fair dealing for the purpose of private study or research, no part may be reproduced without the written permission. The content is provided for information purposes only.*