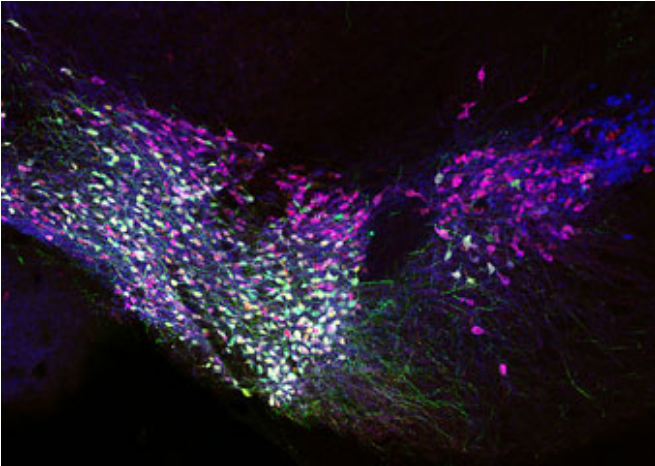


Researchers profile active genes in neurons based on connections

23 May 2014



A new mouse TRAP: The team tested their profiling technique on midbrain mouse neurons (blue) that use the neurotransmitter dopamine to send signals to a brain region known as the nucleus accumbens. To do so, they tagged protein-assembling ribosomes (red) using a small antibody that bound a fluorescent protein (green).

(Medical Xpress)—When it comes to the brain, wiring isn't everything. Although neurobiologists often talk in electrical metaphors, the reality is that the brain is not nearly as simple as a series of wires and circuits. Unlike their copper counterparts, neurons can behave differently depending on the situation.

Researchers in Jeffrey Friedman's Laboratory of Molecular Genetics have devised a way to create snapshots of gene expression in neurons based on their connections. These snapshots contain exhaustive lists of the active genes within neurons that send information to a synapse, the junction between neurons.

Their new technique, called Retro-TRAP, merges two approaches to understanding the brain: mapping all of its connections and profiling gene

expression within populations of neurons, Friedman says. "We hope that Retro-TRAP will be broadly used and provide a more granular understanding of how complex neural circuits function and ultimately lead to better treatments for neurological and neuropsychiatric disorders."

"Refinements in neuroscience over time have allowed us to explore how the nervous system works in ever-greater detail, and the approach we have developed continues this trend," says Mats Ekstrand, a research associate in the laboratory. "By building on existing techniques, we are now able to take a closer look at the types of cells involved in a particular circuit and what they are doing."

In the long run, these sorts of insights might help explain why some diseases, such as Parkinson's Disease, afflict particular sets of neurons, or someday make it possible to precisely target treatments at a dysfunctional neural circuit, rather than bathing the entire brain in drug.

The researchers modified a technique known as translating ribosome affinity purification (TRAP), developed at Rockefeller by Nathaniel Heintz, Paul Greengard and others to identify gene expression using green fluorescent protein to tag protein-assembling machines called ribosomes.

In research published today in *Cell*, Ekstrand, graduate student Alexander Nectow and colleagues describe how they used Retro-TRAP to introduce green fluorescent protein to the neuron via a virus that travels backwards from a synapse into the body of a mouse neuron. The researchers used a small antibody to link the ribosome with the [fluorescent protein](#). Then, using these fluorescent tags, the researchers pulled out the ribosomes and sequenced the genetic messages passing through them. In this way, they produced a list of active genes.

To test their technique, the team focused on inputs p1230–1242, 22 May 2014
to a well-studied part of the brain, the nucleus
accumbens, which integrates information from
throughout the brain, including regions involved in
executive function, memory, depression, reward-
related behavior, feeding and other functions,
Nectow says.

Provided by Rockefeller University

"We wanted to target a selected number of inputs
into the nucleus accumbens because we figured we
might be able to get some molecular clues as to
why it is important in regulating so many functions,"
Nectow says.

Using Retro-TRAP, they created molecular profiles
of neurons extending from the hypothalamus and
ventral midbrain that project to the nucleus
accumbens. The results confirmed that Retro-
TRAP works.

"The nucleus accumbens receives a lot of signals
from the ventral midbrain via the neurotransmitter
dopamine, and, as expected, the genes we
sequenced included many associated with
dopamine neurons," Nectow says.

Their data also contained some new discoveries.
For instance, they found some neurons in the
lateral hypothalamus express the p11 gene
[implicated in depression](#). After some further work,
they found these neurons also tended to express a
protein called orexin, a regulator of sleep and
feeding—suggesting a molecular association
between depression and some of its symptoms.

Retro-TRAP merges two approaches to
understanding the brain: mapping all of the
connections within it and profiling [gene expression](#)
within populations of [neurons](#), Friedman says. "We
hope that Retro-TRAP will be broadly used and
provide a more granular understanding of how
complex neural circuits function and ultimately lead
to better treatments for neurological and
neuropsychiatric disorders."

More information: "Molecular Profiling of
Neurons Based on Connectivity." Mats I. Ekstrand,
Alexander R. Nectow, Zachary A. Knight,
Kaamashri N. Latcha, Lisa E. Pomeranz and
Jeffrey M. Friedman *Cell* Volume 157, Issue 5,

APA citation: Researchers profile active genes in neurons based on connections (2014, May 23)
retrieved 25 August 2022 from <https://medicalxpress.com/news/2014-05-profile-genes-neurons-based.html>

This document is subject to copyright. Apart from any fair dealing for the purpose of private study or research, no part may be reproduced without the written permission. The content is provided for information purposes only.