

# Neighborhood environment linked to cardiovascular health

16 July 2014

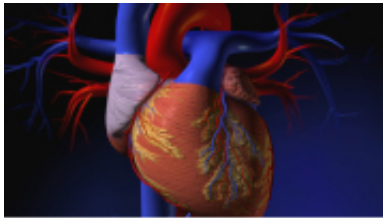


Image courtesy of Blausen Medical

(HealthDay)—Neighborhood environment is associated with ideal cardiovascular health, according to a study published online July 8 in *Circulation: Cardiovascular Quality and Outcomes*.

Erin Unger, M.D., from the Northwestern University Feinberg School of Medicine in Chicago, and colleagues used data from the Multi-Ethnic Study of Atherosclerosis to examine the correlation between [neighborhood environment](#) and overall [cardiovascular health](#). Individual scores were assigned for ideal, intermediate, and poor categories of cholesterol, [body mass index](#), diet, physical activity, fasting glucose, blood pressure, and smoking, based on American Heart Association 2020 Strategic Goals, and the scores were summed. Overall scores were classified as ideal (11 to 14 points), intermediate (9 to 10 points), and poor (0 to 8 points). The neighborhood exposures analyzed included favorable food store, physical activity resources density, reported availability of healthy food, walking/physical activity environment, safety, and social cohesion.

The researchers found that more than 20 percent of participants had an ideal cardiovascular health score at baseline. After full adjustment for demographics and neighborhood socioeconomic status, the odds of having an ideal cardiovascular health score were increased in association with

favorable food stores (odds ratio [OR], 1.22), physical activity resources (OR, 1.19), walking/physical activity environment (OR, 1.20), and neighborhood socioeconomic status (OR, 1.22).

"Further research is needed to investigate the longitudinal associations between neighborhood environment and cardiovascular health," the authors write.

**More information:** [Abstract](#)

[Full Text \(subscription or payment may be required\)](#)

[Editorial \(subscription or payment may be required\)](#)

Copyright © 2014 [HealthDay](#). All rights reserved.

APA citation: Neighborhood environment linked to cardiovascular health (2014, July 16) retrieved 5 September 2022 from <https://medicalxpress.com/news/2014-07-neighborhood-environment-linked-cardiovascular-health.html>

*This document is subject to copyright. Apart from any fair dealing for the purpose of private study or research, no part may be reproduced without the written permission. The content is provided for information purposes only.*