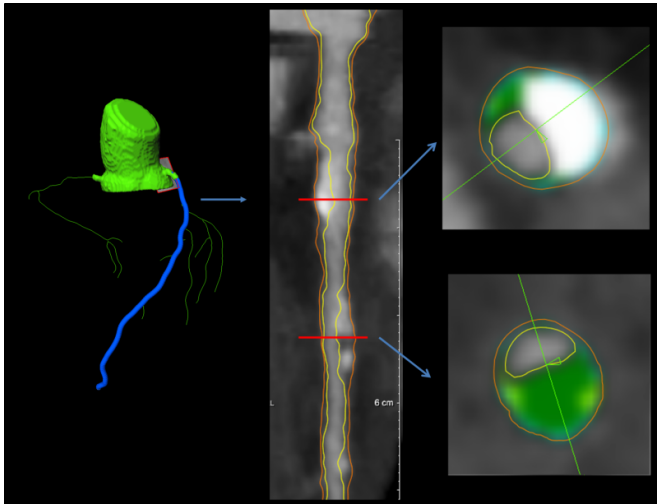


CT angiography links arterial plaque with diabetes, blood pressure, cholesterol

2 June 2015



These images are of a 62-year-old man. Left: coronary segmentation model of the coronary tree. Middle: a curved multiplanar reconstruction of the left anterior descending artery, with the lumen and external vessel walls marked. Right: representative cross-sectional images, with green shading is noncalcified plaque. Credit: Image courtesy of the Radiological Society of North America

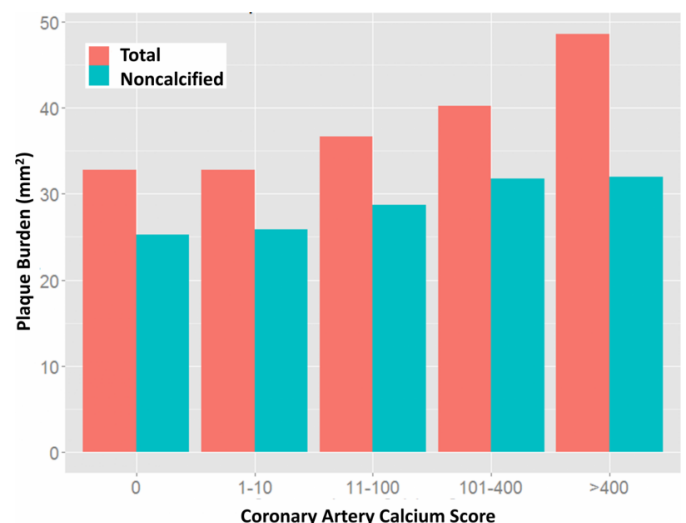
Non-calcified arterial plaque is associated with diabetes, high systolic blood pressure and elevated 'bad' cholesterol levels in asymptomatic individuals, according to a new study published online in the journal *Radiology*.

Coronary artery disease (CAD) is the leading cause of death in men and women worldwide, accounting for 17 million deaths annually. Current treatment strategies focus on cardiovascular risk and serum cholesterol levels rather than direct assessment of extent of disease in the coronary arteries.

Plaque that forms in the arterial walls can restrict blood flow and, in some cases, rupture, leading to potentially fatal heart attacks. There is

considerable evidence that calcified, or stable, plaque is less prone to rupture than non-calcified, or soft, plaque. Intravascular ultrasound can quantify non-calcified and calcified coronary artery plaque, but it is invasive and unsuitable for screening purposes. Coronary artery calcium (CAC) scoring with CT, a common noninvasive option, measures how much calcified plaque a person has, but it doesn't measure non-calcified plaque, and that's the component that tends to be dangerous. Despite treatment for hypercholesterolemia (high levels of cholesterol in the blood), CAC scores often paradoxically increase. Thus, researchers have searched for other plaque measures that can identify treatment response.

'Most information to date about [coronary artery disease](#) and cardiovascular risk factors in asymptomatic individuals has been derived from calcium scoring,' said the study's lead author, David A. Bluemke, M.D., Ph.D., from the NIH Clinical Center. 'We hypothesized that risk factors for the presence of non-calcified plaque may differ from those for calcified plaque.'



The graph shows total and noncalcified plaque

composition (in square millimeters) as a function of CAC score. For very high CAC scores (>400), noncalcified plaque was approximately 67 percent of the total plaque index. For lower plaque scores (11-100), noncalcified plaque was approximately 82 percent of the total plaque index. Credit: Image courtesy of the Radiological Society of North America

Provided by Radiological Society of North America

Coronary computed tomography angiography (CCTA) has emerged as a viable screening option for plaque, including non-calcified plaque. CCTA can capture the full anatomic map of the coronary arteries in a single heartbeat with low radiation dose and provide a complete picture of the total amount of plaque throughout the arteries of the heart.

For the study, Dr. Bluemke and colleagues used CCTA to assess the relationship between calcified and non-calcified coronary plaque burden in the coronary arteries and cardiovascular risk factors in low- to moderate-risk asymptomatic individuals.

The researchers recruited 202 asymptomatic men and women over age 55 who were eligible for statin therapy. CCTA was performed using a 320-detector row CT scanner and an intravenous contrast agent. Coronary wall thickness/plaque was evaluated, and analysis was performed to determine the relationship between risk factors and plaque.

Controlling for all [risk factors](#), total coronary plaque index was greater in men than in women. Non-calcified plaque index was significantly associated with greater [systolic blood pressure](#), diabetes, and elevated low-density lipoprotein (LDL) [cholesterol level](#).

'These results highlight the potential of CCTA in quantifying [plaque](#) burden to assess progression or regression of [coronary artery](#) disease in low to moderate risk individuals,' Dr. Bluemke said.

More information: Coronary plaque burden at coronary CT angiography in asymptomatic men and women, *Radiology*, 2015.

APA citation: CT angiography links arterial plaque with diabetes, blood pressure, cholesterol (2015, June 2) retrieved 30 April 2021 from <https://medicalxpress.com/news/2015-06-ct-angiography-links-arterial-plaque.html>

This document is subject to copyright. Apart from any fair dealing for the purpose of private study or research, no part may be reproduced without the written permission. The content is provided for information purposes only.