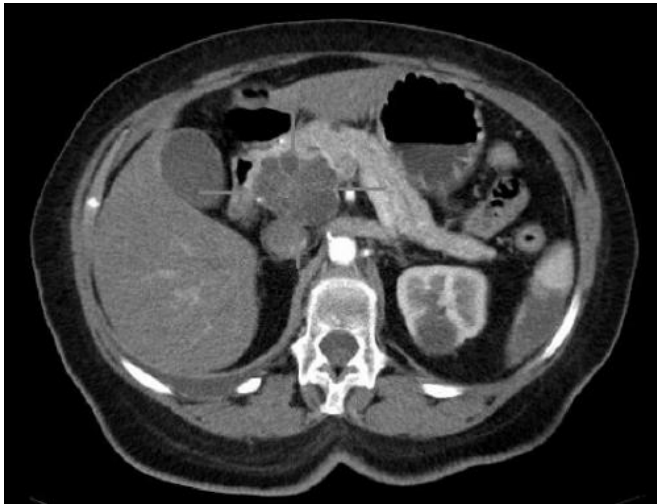


# Tiny particles in blood useful for early diagnosis of pancreatic cancer

24 June 2015



Axial CT image with i.v. contrast. Macrocystic adenocarcinoma of the pancreatic head. Credit: public domain

A protein encoded by the gene glypican-1 (GPC1) present on cancer exosomes may be used as part of a potential non-invasive diagnostic and screening tool to detect early pancreatic cancer, potentially at a stage amenable to surgical treatment, according to a study at The University of Texas MD Anderson Cancer Center.

Exosomes - tiny, virus-sized particles released by cancer cells, contain DNA, RNA and proteins. Scientists isolated and monitored GPC1-enriched circulating exosomes from the blood of [pancreatic cancer](#) patients, termed GPC1+ crExos.

"GPC1+ crExos were detected in small amounts of serum from about 250 patients with pancreatic cancer with absolute specificity and sensitivity, importantly distinguishing patients with chronic pancreatitis from those with early- and late-stage pancreatic cancer," said Raghu Kalluri, M.D., Ph.D., chair of Cancer Biology.

Levels of GPC1+ crExos were significantly lower in patients following surgical removal of the tumor, said Kalluri, whose study results are published in the June 24, 2015 issue of *Nature*. The study examined crExos from healthy donors and breast and pancreatic [cancer patients](#). Elevated GPC1+ crExos were seen in both cancers.

"GPC1+ crExos can be detected and isolated in blood samples that were stored in freezers almost 30 years ago, unlike circulating tumor cells (CTCs) that require large amounts of fresh blood," said Kalluri. "DNA, RNA and proteins can be isolated from cancer exosomes isolated from stored specimen for further genetic and biological analyses. Therefore, cancer exosomes are not just a biomarker but isolating them provides a trove of cancer specific information."

GPC1+ crExos appear to be a more reliable screening tool than the commonly used CA 19-9 biomarker. The study found that GPC1+ crExos detected the possibility of pancreatic cancer in mouse models of pancreatic cancer at a time when the mice showed no signs of [pancreatic disease](#) by MRI.

"Routine screening of the general population for pancreatic cancer using MRIs or CTs would be prohibitively expensive with the likelihood for many false positives," said David Piwnica-Worms, M.D., Ph.D., chair of Cancer Systems Imaging, "Our study suggests the potential for GPC1+ crExos as a detection and monitoring tool for pancreatic cancer in combination with imaging, with an emphasis on its application in early detection."

Because pancreatic cancer-specific genetics can be detected in these exosomes, there is great potential to enhance specificity of MRIs or CTs," said Kalluri

If detected early, surgery involving a pancreaticoduodenectomy or the Whipple procedure can be

curative for pancreatic cancer patients. Since pancreatic cancer is often diagnosed in the later stages, only about 15 percent of patients qualify for the surgery.

"Studies comparing stage of disease with outcome following surgery suggest that death rates for pancreatic cancer would be reduced if the disease were diagnosed at an earlier stage," said Kalluri. "This presents an unprecedented opportunity for informative early detection of pancreatic cancer and in designing potential curative surgical options."

**More information:** *Nature*, [DOI: 10.1038/nature14581](https://doi.org/10.1038/nature14581)

Provided by University of Texas M. D. Anderson  
Cancer Center

APA citation: Tiny particles in blood useful for early diagnosis of pancreatic cancer (2015, June 24) retrieved 30 September 2022 from <https://medicalxpress.com/news/2015-06-tiny-particles-blood-early-diagnosis.html>

*This document is subject to copyright. Apart from any fair dealing for the purpose of private study or research, no part may be reproduced without the written permission. The content is provided for information purposes only.*