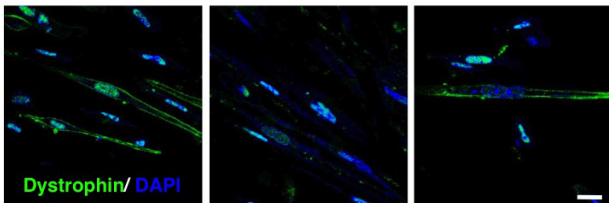


iPS cells discover drug target for muscle disease

20 August 2015



Healthy muscle cells express dystrophin (green, left), but DMD patients do not (middle). Treating iPS cells that are then differentiated into muscle cells can recover dystrophin levels (right). Credit: Dr. Hidetoshi Sakurai Laboratory, Kyoto University

Duchenne muscular dystrophy (DMD) is a muscular disease that shows symptoms in early childhood and causes progressive atrophy and eventual death. There is little in terms of treatment, partly because of poor understanding of how DMD develops, although it is known that abnormal expression of the protein dystrophin is at fault.

Normally, to study DMD development, patient muscles, the [cells](#) that develop into [muscle cells](#), are used to study DMD development. However, because patients suffer from variable stages of DMD, their cells are not suitable for studying the early stages of DMD development and preventative measures. To overcome this problem, Hidetoshi Sakurai, Senior Lecturer at CiRA, and his team, in collaboration with the Institute for Frontier Medical Sciences at Kyoto University, have designed a model that reprograms fibroblasts to the early stages of their differentiation into intact muscle cells.

The strategy depends on first reprogramming the patient cells to induced pluripotent stem (iPS) cells and then introducing a gene that differentiates the iPS cells to muscle cells. "Our model allows us to use the same genetic background to study the

early stage of pathogenesis which was not possible in the past," says CiRA researcher Emi Shoji, the first author of a study published in *Scientific Reports* that gives new insights on DMD development.

Muscle contraction depends on an influx of calcium (Ca²⁺) ions into the cells. However, too much influx leads to cell dysfunction or death, which is believed to be the underlying cause of DMD. "It is critical to assess intact cells for an accurate evaluation how Ca²⁺ influx leads to DMD pathogenic cascades," says Shoji. She therefore stimulated their model electrically to simulate muscle cell contraction, finding that cells from DMD patients had significantly increased influx. Further study laid blame on transient receptor potential (TRP) channels through which the Ca²⁺ ions enter the cell. This observation is consistent with other models and provides a clear drug target for the treatment of DMD. More important, it should allow scientists to uncover drug agents that can counter DMD at early development. "TRP channels have been identified before. But because our model uses patient-derived hiPS cells, there is a potential that we can find new drugs for DMD," says Sakurai.

More information: Early pathogenesis of Duchenne muscular dystrophy modeled in patient-derived human induced pluripotent stem cells, *Scientific Reports*, 2015.

Provided by Kyoto University

APA citation: iPS cells discover drug target for muscle disease (2015, August 20) retrieved 6 May 2021 from <https://medicalxpress.com/news/2015-08-ips-cells-drug-muscle-disease.html>

This document is subject to copyright. Apart from any fair dealing for the purpose of private study or research, no part may be reproduced without the written permission. The content is provided for information purposes only.