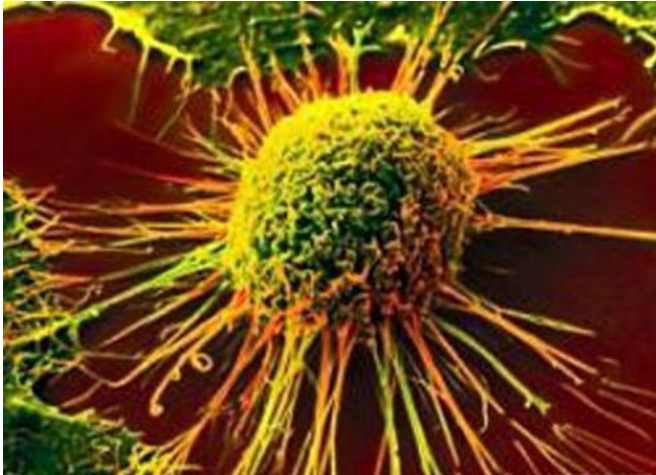


Synthetic plant hormones shut down DNA repair in cancer cells

16 February 2016



"MEB55 and ST362 appear to be very promising agents. Our study suggests that when used with [anti-cancer drugs](#) called PARP inhibitors, the combination is effective and does not harm [normal cells](#)," says the study's senior investigator, Ronit Yarden, PhD, assistant professor in the department of human science at the Georgetown University School of Nursing & Health Studies and a member of Georgetown Lombardi Comprehensive Cancer Center.

Her collaborators include researchers at ARO, Israel and University of Turin, Italy who first synthesized MEB55 and ST362. Using a technique developed at Georgetown called conditionally reprogrammed cells, which allows cells to grow indefinitely, investigators were able to study the agents in a patient's prostate cancer cells.

Two drugs that mimic a common plant hormone effectively cause DNA damage and turn off a major DNA repair mechanism, suggesting their potential use as an anti-cancer therapy, say investigators at Georgetown University Medical Center. Their study is published online in *Oncotarget*.

The agents, MEB55 and ST362, are a synthetic version of strigolactones, a class of [plant hormones](#) made in roots that regulate development of [plant roots](#) under ground and shoots above ground.

The Georgetown researchers are the first to investigate the hormone for its anti-cancer properties and since 2009 have led a series of studies showing that synthetic versions of strigolactones can shut down cancer growth in breast, prostate, colon, lung and a variety of other [tumor cells](#). Their new study reveals the mechanisms of the plant hormone and how it can be lethal in human [prostate cancer cells](#) when combined with another cancer drug.

The study shows that when either MEB55 or ST362 are combined with a PARP inhibitor, the cells die. The synthetic plant hormones halt the DNA repair process that occurs after the cell's DNA is copied and before it divides. The PARP inhibitor shuts down a second repair pathway, leaving cancer cells with no alternative but to die. "Mistakes in copying DNA are especially prevalent in cancer cells, so without any way to repair their DNA, these cells self destruct," Yarden says.

The idea to use PARP inhibitors comes from its use in breast and ovarian cancer, where cancers develop due to mutated BRCA1/BRCA2 genes, she says. The BRCA genes, when normal, control a DNA repair pathway, but when mutated, cannot repair genes—the same effect offered by the synthetic hormones.

Yarden says she expects to soon test the combination of agents in animal models of varied cancers.

Provided by Georgetown University Medical

Center

APA citation: Synthetic plant hormones shut down DNA repair in cancer cells (2016, February 16)
retrieved 3 August 2022 from <https://medicalxpress.com/news/2016-02-synthetic-hormones-dna-cancer-cells.html>

This document is subject to copyright. Apart from any fair dealing for the purpose of private study or research, no part may be reproduced without the written permission. The content is provided for information purposes only.