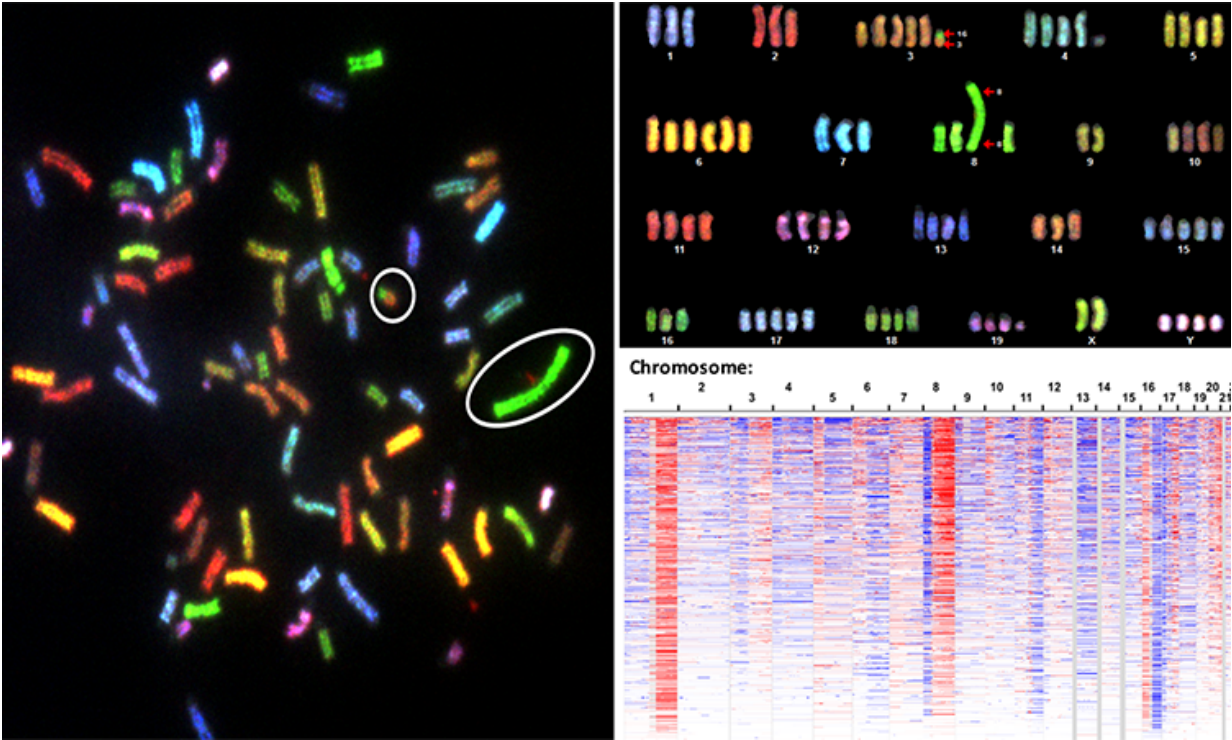


# DNA patterns can unlock how glucose metabolism drives cancer, study finds

February 16 2017



Genomically unstable cancer cells can have as many as two times more chromosomes than healthy cells, as well as other abnormalities (left, circles). When scientists group like chromosomes together (right), it can reveal patterns that help them better detect the genetic aberrations that drive cancer growth. Credit: University of California, Los Angeles

Less aggressive cancers are known to have an intact genome—the

complete set of genes in a cell—while the genome of more aggressive cancers tends to have a great deal of abnormalities. Now, a new multi-year study of DNA patterns in tumor cells suggests that these aberrant genetic signatures are not random but reflect selective forces in tumor evolution. The findings also demonstrate that these changes drive glucose metabolism in cells, which improves the fitness of tumors and can lead to accelerated cancer growth.

The new study was led by senior author Dr. Thomas Graeber, professor of molecular and medical pharmacology and member of the UCLA Jonsson Comprehensive Cancer Center's Cancer Nanotechnology Program. The first authors are Dr. Nicholas Graham, assistant professor of chemical engineering at the USC Viterbi School of Engineering, and Dr. Aspram Minasyan, postdoctoral fellow in the UCLA Crump Institute of Molecular Imaging.

Copy number alteration (CNA) measurements are used to profile tumors across a wide variety of cancer types by looking for recurring patterns in how genes are amplified or deleted in DNA. Modern research has focused largely on individual cancer genes as the primary targets for DNA mutations and copy number alternations, specifically oncogenes (that when mutated or amplified are like a stuck gas pedal and can turn healthy cells into tumor cells) and tumor suppressor genes (that when not working properly are like a broken or missing brake pedal, allowing cells to grow out of control). However, scientists continue to observe many recurrent CNA patterns in tumors that cannot be fully explained by these canonical cancer genes.

It has long been known that a fundamental difference between [healthy cells](#) and tumor-forming cells is reprogrammed cellular metabolism. An altered metabolism benefits a transformed cell in many ways, particularly in the ability to convert glucose into energy. This process, known as glycolysis, can fuel tumor growth and is also used to detect

tumors through PET imaging. Research has further shown a strong correlation between higher levels of glycolytic activity and the most aggressive cancers. The findings tie these aspects to the disrupted genomes of cancer by demonstrating that the previously unexplained recurrent CNA patterns reflect glucose metabolism as a selective pressure for genomic changes in many cancer types, particularly aggressive forms of the disease.

In the five-year study, Graeber and his colleagues used a cross-cancer analysis of CNA data from human tumors, cancer cell lines, and mouse models of cancer. The team analyzed samples from 15 different [cancer types](#). They found that CNA patterns of DNA amplification and deletion were predictive of both increased glycolytic activity and rapid growth of [tumor cells](#). To understand how enzymes might play a role in this process, the scientists compared the CNA patterns of human tumors and mouse models. They discovered 26 DNA regions with consistent genetic alterations, containing 11 enzymes in the glycolysis pathway as well as known cancer-driving genes.

The researchers next used an experimental immortalization system and genetic engineering to directly demonstrate that glycolytic enzymes can impact the CNA signature. By sampling [cells](#) at different points in time, the researchers were able to show how these patterns evolve and thus shape the cancer genome.

The study is one of the first to use high-resolution genome-wide CNA signatures to identify and define new classes of tumors to further complement sub-classes defined by point mutations in oncogenes. With these findings, researchers can build improved [cancer](#) models and advance the development of therapeutics for all types of the disease.

"By focusing on such a large dataset and more than just known point mutations, we now better understand how subtle patterns of combined

genetic alterations can affect [glucose metabolism](#) and are in sum key drivers of the most aggressive cancers," Graeber said. "Scientists now have a whole new sandbox where we can test and develop the tools that will lead to new treatments for people fighting this disease."

**More information:** Nicholas A Graham et al. Recurrent patterns of DNA copy number alterations in tumors reflect metabolic selection pressures, *Molecular Systems Biology* (2017). [DOI: 10.15252/msb.20167159](#)

Provided by University of California, Los Angeles

Citation: DNA patterns can unlock how glucose metabolism drives cancer, study finds (2017, February 16) retrieved 5 October 2023 from <https://medicalxpress.com/news/2017-02-dna-patterns-glucose-metabolism-cancer.html>

<p>This document is subject to copyright. Apart from any fair dealing for the purpose of private study or research, no part may be reproduced without the written permission. The content is provided for information purposes only.</p>
--