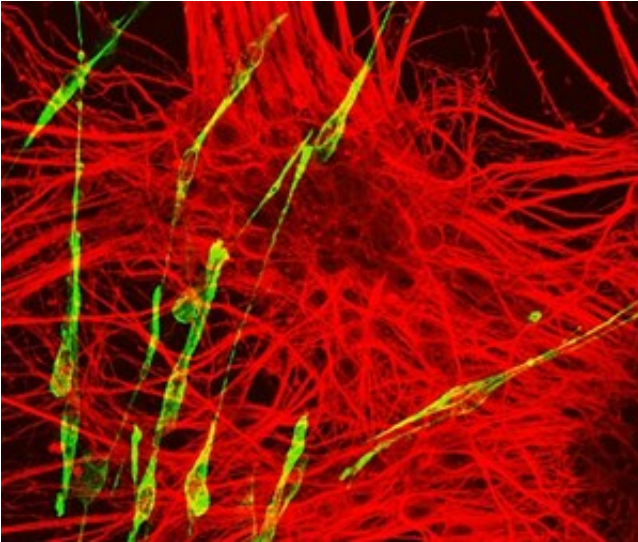


New study reveals how embryonic cells make spinal cord, muscle and bone

28 April 2017



Neurons (red) and muscle cells (green) produced from NMPs in the laboratory. Credit: James Briscoe, Francis Crick Institute

A study from scientists at the Francis Crick Institute, the Max-Delbrück Center for Molecular Medicine, Berlin and the University of Edinburgh sheds new light on the cells that form spinal cord, muscle and bone tissue in mammalian embryos.

This discovery paves the way for generating these tissues from stem cells in the laboratory and could lead to new ways of studying degenerative conditions such as [motor neuron disease](#) and muscular dystrophy.

In embryos, the [spinal cord](#), muscle and skeleton are produced from a group of cells called NMPs (neuro-mesodermal progenitors). These cells are few in number and exist only for a short time in embryos, despite giving rise to many tissues in the body. Their scarcity and inaccessibility has made studying NMPs challenging. Now, by using the latest molecular techniques, the research team has for the first time deciphered gene activity in NMPs.

They used an advanced technique called single-cell transcriptional profiling, which analyses [individual cells](#) to provide a detailed picture of [gene activity](#) in every cell.

The technique allowed the team to establish a molecular signature of NMPs and to show that NMPs produced from [stem cells](#) in petri dishes in the laboratory closely resemble those found in embryos. This enabled the team to use lab-grown NMPs to learn more about these cells and how they make spinal cord, muscle and [bone tissue](#). By manipulating the cells in [petri dishes](#) and testing the function of specific genes, the researchers re-constructed the regulatory mechanism and formulated a mathematical model that explains how NMPs produce the appropriate amounts of spinal cord and musculoskeletal cells.

Dr James Briscoe, who led the research from the Francis Crick Institute said:

"For embryonic development to progress smoothly, NMPs must make the right types of cells, in the right numbers at the right time. Understanding how cells such as NMPs make decisions is therefore central to understanding embryonic development. Single cell profiling techniques, including the ones we used in this study, are giving us unprecedented insight into this problem and offering a new and fascinating view of how embryos produce the different tissues that make up adults."

First author of the study Dr Mina Gouti, from the Max-Delbrück Center for Molecular Medicine, Berlin said:

"Improving our understanding of NMPs doesn't only answer an important developmental biology question but also holds great promise for regenerative medicine. It takes us a step closer to being able to use tissue from patients with diseases that affect muscles and motor neurons in order to study the causes and progress of these diseases.

Being able to grow [cells](#) in the laboratory that faithfully resemble those found in the body is crucial for this."

The paper, A gene regulatory network balances neural and mesoderm specification during vertebrate trunk development, is published in *Developmental Cell*.

More information: Mina Gouti et al. A Gene Regulatory Network Balances Neural and Mesoderm Specification during Vertebrate Trunk Development, *Developmental Cell* (2017). [DOI: 10.1016/j.devcel.2017.04.002](#)

Provided by The Francis Crick Institute

APA citation: New study reveals how embryonic cells make spinal cord, muscle and bone (2017, April 28) retrieved 4 May 2021 from <https://medicalxpress.com/news/2017-04-reveals-embryonic-cells-spinal-cord.html>

This document is subject to copyright. Apart from any fair dealing for the purpose of private study or research, no part may be reproduced without the written permission. The content is provided for information purposes only.