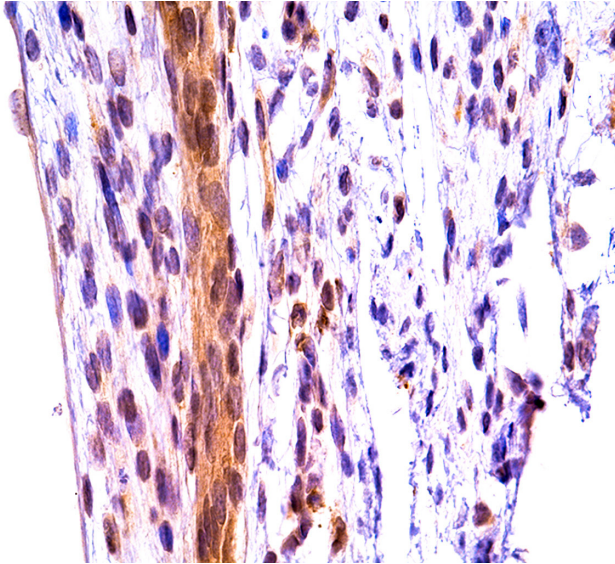


# Research points to diagnostic test for top cause of liver transplant in kids

22 November 2017



A section of obstructed extrahepatic bile duct in a neonatal mice. It exhibits residual expression of the enzyme called MMP-7 (shown in brown). Researchers report Nov. 22 in *Science Translational Medicine* that MMP-7 is a strong biomarker candidate for earlier diagnosis of biliary atresia, the most common cause of liver transplants for children in the United States. This could lead to earlier lifesaving treatments and possibly avoid more invasive procedures like liver transplant. Credit: Cincinnati Children's

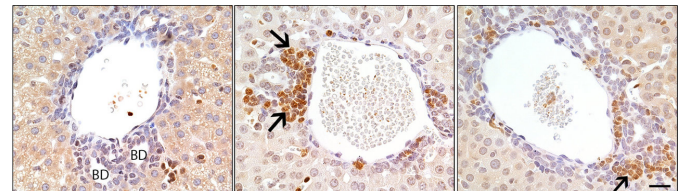
Biliary atresia is the most common cause of liver transplants for children in the United States. Now researchers report in *Science Translational Medicine* finding a strong biomarker candidate that could be used for earlier diagnosis and lifesaving treatments, possibly avoiding more invasive procedures like liver transplant.

A research team led by Cincinnati Children's Hospital Medical Center identified molecular markers of the disease in blood samples that accurately diagnosed the condition with greater than 90% sensitivity and specificity in infants,

according to Jorge Bezerra, MD, lead investigator and director of Gastroenterology, Hepatology and Nutrition.

"From a broad screen of over 1,000 proteins, we found a unique protein associated with [biliary atresia](#). Testing this protein as a diagnostic biomarker in two additional groups of babies to validate accuracy, it passed with flying colors," he said. "These findings have real implications for the diagnosis and care of these babies."

Biliary atresia is a rare disease of the liver and bile ducts that occurs in infants. Liver cells produce a liquid called bile, which helps digest fat and carries waste products from the liver to the intestines. When a baby has biliary atresia, this flow is blocked. Bile becomes trapped inside the liver, quickly causing liver damage and eventually liver failure.



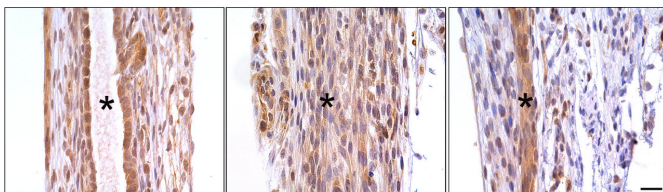
Images of inflammatory cells infiltrating the bile duct of an animal model of the liver disorder biliary atresia. Credit: C. Lertudomphonwanit et al., *Science Translational Medicine* (2017)

Early diagnosis and prompt surgical intervention are the best predictors of treatment success, according to study authors. But current diagnostic methods are time-consuming and imprecise. Part of the challenge is biliary atresia has several potential causes, such as viruses, environmental toxins and a dysregulated immune system.

This makes identification of faster, more effective and less invasive diagnostic methods challenging. But it also makes finding better diagnostics a high priority to allow earlier medical intervention, according to Bezerra and his colleagues, including first author Chatmanee Lertudomphonwanit, MD, of Cincinnati Children's and Ramathibodi Hospital (Mahidol University) in Bangkok, Thailand.

### Blood Proteomics

To look for molecules involved in the biliary atresia disease process, researchers analyzed the blood of 70 biliary atresia patients to identify proteins that are significantly elevated when the disease is progressing. To do this, they performed a large-scale proteomics analysis—essentially a search among over 1,000 proteins and their levels found in patients' blood. The lead biomarker they identified is matrix metalloproteinase-7 (MMP-7), an enzyme that breaks down tissues and is implicated in several disease processes.



Images of blocked bile ducts due to the liver disease biliary atresia. Credit: C. Lertudomphonwanit et al., *Science Translational Medicine* (2017)

that MMP-7 is released during bile duct injury to promote obstruction and subsequent problems.

To further demonstrate whether MMP-7 damages bile duct tissues, the researchers used a pharmacologic inhibitor of the protein called Batimastat, which is approved only for laboratory research. This inhibition suppressed the onset of biliary atresia and decreased tissue injury in mouse models.

### Next Steps

Future areas of studies will include validation in additional population and the development of an assay that allows MMP-7 to be quantified and used in the clinic as a readily available test for [early diagnosis](#). Bezerra will also design strategies to measure MMP-7 as a monitor of [liver](#) disease worsening toward cirrhosis. He said it will be "intriguing" to determine whether Batimastat's success in suppressing the [disease](#) in mice points to future treatments to target pathways linked to the enzyme.

**More information:** C. Lertudomphonwanit et al., "Large-scale proteomics identifies MMP-7 as a sentinel of epithelial injury and of biliary atresia," *Science Translational Medicine* (2017). [stm.sciencemag.org/lookup/doi/10.1126/scitranslmed.aan8462](http://stm.sciencemag.org/lookup/doi/10.1126/scitranslmed.aan8462)

Provided by Cincinnati Children's Hospital Medical Center

When researchers tested the diagnostic effectiveness of MMP-7 on its own, it had 97% sensitivity and 91% specificity for biliary atresia. Combining the use of MMP-7 with another blood test that is currently available, gamma-glutamyl transpeptidase (GGT) further increased the diagnostic accuracy and decreased the risk of misdiagnose prior to the [surgical intervention](#).

The authors also performed what the researchers call proof-of-principal tests to investigate the role of MMP-7 in the onset of biliary injury in mouse models of the disease. The experiments showed

APA citation: Research points to diagnostic test for top cause of liver transplant in kids (2017, November 22) retrieved 30 April 2021 from <https://medicalxpress.com/news/2017-11-diagnostic-liver-transplant-kids.html>

*This document is subject to copyright. Apart from any fair dealing for the purpose of private study or research, no part may be reproduced without the written permission. The content is provided for information purposes only.*