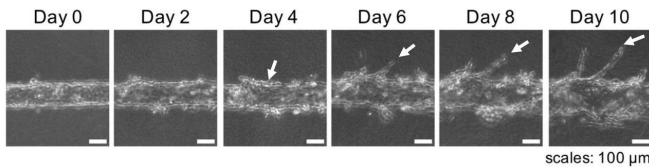


Blood vessel-on-a-chips show anti-cancer drug effects in human cells

31 January 2018



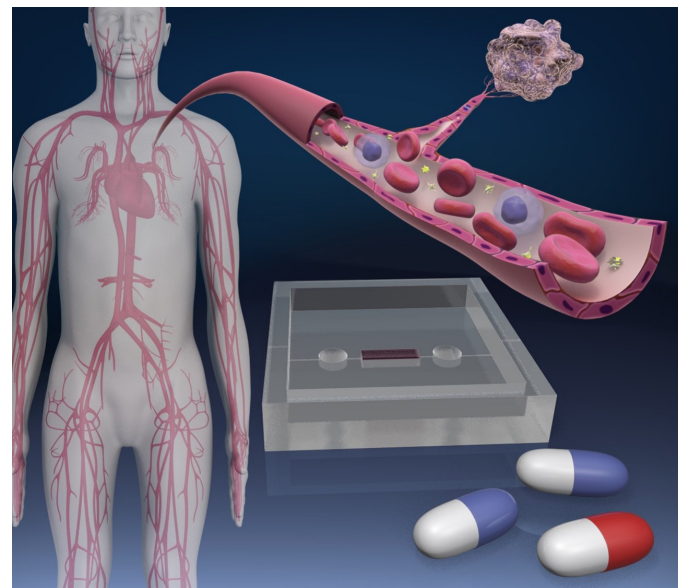
"The biochemistry of sprouting angiogenesis is well understood. VEGF leads endothelial cells to express DLL4, which activates NOTCH signaling. What is lacking is a good system to study drugs that are effective on angiogenesis," said Matsunaga.

Adding VEGF stimulated the formation of sprouts on the vessel. Credit: 2018 Yukiko Matsunaga, Institute Of Industrial Science, The University Of Tokyo

Researchers at the Institute of Industrial Science (IIS), the University of Tokyo, CNRS and INSERM, report a new organ-on-a-chip technology for the study of blood vessel formation and drugs targeting it. The technology recreates a human blood vessel and shows how new capillaries grow from a single vessel in response to proper biochemical signaling cues. The technology can further be used to develop drugs targeting this growth as a therapeutic approach to treat cancer and blood-vessel-related diseases. The study has been published in *EBioMedicine*.

Angiogenesis is a process of [blood vessel formation](#) from pre-existing [blood vessels](#). Dr. Yukiko Matsunaga, lecturer at the IIS, the University of Tokyo, has been working in the SMMIL-E project, a joint French-Japanese project against [cancer](#) using tissue engineering and organ-on-a-chip technology to study biological phenomena including [angiogenesis](#). Her new technology provides a simple setting to study angiogenesis and other effects such as the dynamics of [blood vessel](#) permeability.

Vascular endothelial growth factors (VEGF) are the primary proteins responsible for angiogenesis. They signal to the parental vessel to initiate sprouting and the direction toward which the new capillaries must grow.



Blood vessel-on-a-chips show anti-cancer drug effects in human cells. Credit: 2018 Yukiko Matsunaga, Institute Of Industrial Science, The University Of Tokyo

Indeed, while necessary for organ survival, angiogenesis also sustains diseases like cancer. Several anti-cancer drugs such as sorafenib and sunitinib are effective in large part because of their anti-angiogenic effects.

In the new system, which was designed by Dr. Joris Pauty, a scientist in the Matsunaga laboratory, a single human blood vessel is fabricated into a collagen gel scaffold on a chip. Subsequent experiments performed with the support of a member of the SMMIL-E project, Dr. Fabrice

Soncin (INSERM, France) confirmed that VEGF activated NOTCH signaling through DLL4, just as in the human body. Adding either sorafenib or sunitinib inhibited the sprouting, but only sorafenib made the vessels highly permeable, which is a non-physiological condition. That both drugs prevented new vessel growth but with different effects on blood vessel permeability may explain why the two work differently in cancer treatment.

Since many diseases like cancer and diabetic retinopathy induce new vessels for their progression, Matsunaga noted that the chips could be used for even more advanced studies for [drug](#) effects on angiogenesis and cancer or diabetes. "We can also use cancer cells into the chip to test their combined effects with the drugs on angiogenesis."

More information: Joris Pauty et al, A Vascular Endothelial Growth Factor-Dependent Sprouting Angiogenesis Assay Based on an In Vitro Human Blood Vessel Model for the Study of Anti-Angiogenic Drugs, *EBioMedicine* (2017). DOI: [10.1016/j.ebiom.2017.12.014](https://doi.org/10.1016/j.ebiom.2017.12.014)

Provided by Institute of Industrial Science, The University of Tokyo

APA citation: Blood vessel-on-a-chips show anti-cancer drug effects in human cells (2018, January 31) retrieved 15 October 2022 from <https://medicalxpress.com/news/2018-01-blood-vessel-on-a-chips-anti-cancer-drug-effects.html>

This document is subject to copyright. Apart from any fair dealing for the purpose of private study or research, no part may be reproduced without the written permission. The content is provided for information purposes only.