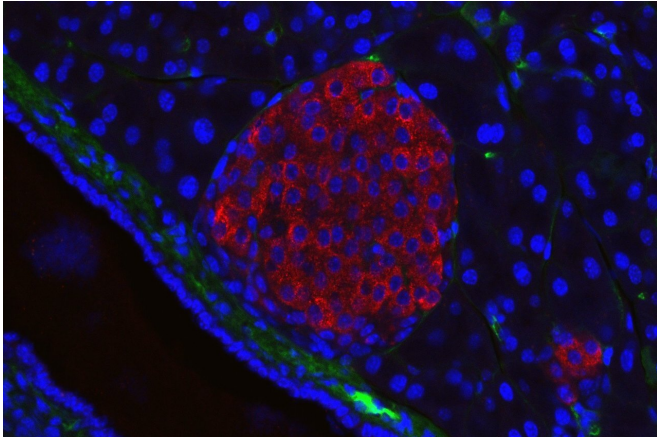


# Implantable islet cells come with their own oxygen supply

25 April 2018



A pancreatic islet from a mouse in a typical position, close to a blood vessel; insulin in red, nuclei in blue. Credit: Generated in the Solimena lab, Paul Langerhans Institute Dresden

Since the 1960s, researchers have been interested in the possibility of treating type 1 diabetes by transplanting islet cells—the pancreatic cells that are responsible for producing insulin when blood glucose concentration increases.

Implementing this approach has proven challenging, however. One obstacle is that once the islets are transplanted, they will die if they don't receive an adequate supply of [oxygen](#). Now, researchers at MIT, working with a company called Beta-O2 Technologies, have developed and tested an implantable device that furnishes [islet](#) cells with their own supply of oxygen, via a chamber that can be replenished every 24 hours.

"Getting oxygen to these cells is a difficult problem," says Clark Colton, an MIT professor of chemical engineering and the senior author of the study. "The benefits of this approach are: you keep the islets alive to perform their function, you don't need as much tissue, and you reduce the ability of

the implants to provoke an [immune response](#)."

Tests of these implants in rats showed that nearly 90 percent of the islets remained viable for several months, and most of the rats maintained normal [blood glucose](#) levels throughout that time.

Yoav Evron of Beta-O2 Technologies is the lead author of the study, which appears in the April 25 issue of *Scientific Reports*.

## Protecting islets

Type 1 diabetes occurs when a patient's own immune system destroys pancreas' islet cells, so the patient can no longer produce insulin, which is necessary for the body to absorb sugar from the bloodstream. Early attempts to treat patients by transplanting islets from cadavers were unsuccessful because the islets didn't survive after transplantation.

One of the reasons the transplanted islets failed is that they were attacked by the patients' immune systems. To protect the transplanted cells, researchers have begun developing implants in which the islets are encapsulated in a material such as a polymer. However, a remaining challenge is making sure that the islets receive enough oxygen, Colton says.

In a healthy pancreas, all islet cells come into contact with capillaries, allowing them to receive oxygen-rich blood, at an oxygen partial pressure of about 100 millimeters of mercury (mm Hg). (Partial pressure is a measure of the concentration of an individual gas within a mixture of gases). When doctors first tried to transplant islets into diabetic patients, many of the cells did not have any direct contact with capillaries, so their oxygen supply was too low.

Previous research in Colton's laboratory discovered that the outer surface of islets needs to be exposed

to at least 50 mm Hg of oxygen to remain viable and produce insulin normally. Through a series of experiments, the MIT team, working with researchers at Beta-O2 Technologies, determined the operating conditions of the device needed for islets to stay alive and function for long periods of time while assembled in a compact form small enough to be implanted in human patients.

In the device tested in the *Scientific Reports* paper, islets are encapsulated in a slab of alginate, a polysaccharide produced by algae, about 600 microns thick. A membrane on one side of slab keeps out immune cells and large proteins but allows insulin, nutrients, and oxygen through. Below the slab is the gas chamber, about 5 millimeters thick, which carries atmospheric gases such as nitrogen and carbon dioxide in addition to oxygen. Oxygen flows from the chamber, across the semipermeable membrane, and into the islets embedded in the alginate slab.

As oxygen diffuses through the slab, it is gradually consumed, so the oxygen partial pressure continually drops. To ensure that the partial pressure remains at least 50 mm Hg for 24 hours, the researchers found that they needed to begin with an [oxygen partial pressure](#) of 500 mm Hg in the gas chamber.

After 24 hours, the [oxygen supply](#) is replenished through a port—a device implanted under the skin and connected to a catheter that leads to the encapsulated islets, which are also implanted under the skin.

### Long-term survival

In tests in diabetic mice without immunosuppression, the [researchers](#) showed that nearly 90 percent of the islets survived the entire transplant period, which ranged from 11 weeks to eight months. They also found that most of these animals' blood sugar levels remained normal while the devices were implanted, then rebounded to diabetic levels after they were removed.

Another benefit of this approach is that, because most of the [islet cells](#) remain alive, they are less likely to provoke an immune response. When cells

die, they break down, and the resulting fragments of protein and DNA are more likely to attract the attention of the immune system.

"By keeping the [cells](#) alive, you minimize the immune response," Colton says.

Researchers at Beta-O2 Technologies are now working on new versions of the device in which an oxygen storage chamber is implanted below the skin, separate from the islets. This version would only need to be replenished once a week, which could be more appealing for patients.

Provided by Massachusetts Institute of Technology

APA citation: Implantable islet cells come with their own oxygen supply (2018, April 25) retrieved 27 April 2021 from <https://medicalxpress.com/news/2018-04-implantable-islet-cells-oxygen.html>

*This document is subject to copyright. Apart from any fair dealing for the purpose of private study or research, no part may be reproduced without the written permission. The content is provided for information purposes only.*