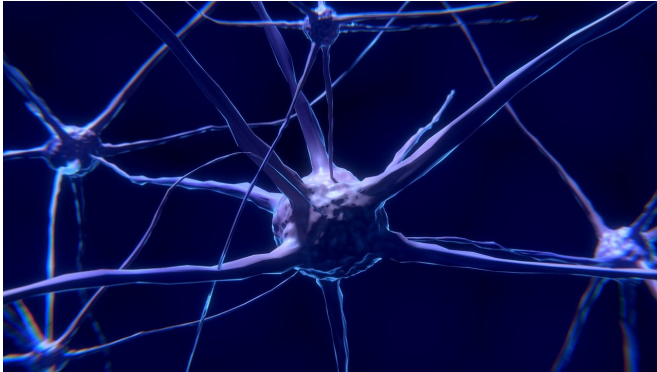


Brain activity pattern may be early sign of schizophrenia

8 November 2018



Credit: CC0 Public Domain

Schizophrenia, a brain disorder that produces hallucinations, delusions, and cognitive impairments, usually strikes during adolescence or young adulthood. While some signs can suggest that a person is at high risk for developing the disorder, there is no way to definitively diagnose it until the first psychotic episode occurs.

MIT neuroscientists working with researchers at Beth Israel Deaconess Medical Center, Brigham and Women's Hospital, and the Shanghai Mental Health Center have now identified a pattern of [brain](#) activity correlated with development of [schizophrenia](#), which they say could be used as a marker to diagnose the disease earlier.

"You can consider this pattern to be a risk factor. If we use these types of brain measurements, then maybe we can predict a little bit better who will end up developing psychosis, and that may also help tailor interventions," says Guusje Collin, a visiting scientist at MIT's McGovern Institute for Brain Research and the lead author of the paper.

The study, which appears in the journal *Molecular Psychiatry* on Nov. 8, was performed at the

Shanghai Mental Health Center. Susan Whitfield-Gabrieli, a visiting scientist at the McGovern Institute and a professor of psychology at Northeastern University, is one of the principal investigators for the study, along with Jijun Wang of the Shanghai Mental Health Center, William Stone of Beth Israel Deaconess Medical Center, the late Larry Seidman of Beth Israel Deaconess Medical Center, and Martha Shenton of Brigham and Women's Hospital.

Abnormal connections

Before they experience a [psychotic episode](#), characterized by sudden changes in behavior and a loss of touch with reality, [patients](#) can experience milder symptoms such as disordered thinking. This kind of thinking can lead to behaviors such as jumping from topic to topic at random, or giving answers unrelated to the original question. Previous studies have shown that about 25 percent of people who experience these early symptoms go on to develop schizophrenia.

The research team performed the study at the Shanghai Mental Health Center because the huge volume of patients who visit the hospital annually gave them a large enough sample of people at high risk of developing schizophrenia.

The researchers followed 158 people between the ages of 13 and 34 who were identified as high-risk because they had experienced early symptoms. The team also included 93 control subjects, who did not have any risk factors. At the beginning of the study, the researchers used functional magnetic resonance imaging (fMRI) to measure a type of brain activity involving "resting state networks." Resting state networks consist of brain regions that preferentially connect with and communicate with each other when the brain is not performing any particular cognitive task.

"We were interested in looking at the intrinsic

functional architecture of the brain to see if we could detect early aberrant brain connectivity or networks in individuals who are in the clinically high-risk phase of the disorder," Whitfield-Gabrieli says.

One year after the initial scans, 23 of the high-risk patients had experienced a psychotic episode and were diagnosed with schizophrenia. In those patients' scans, taken before their diagnosis, the researchers found a distinctive pattern of activity that was different from the healthy control subjects and the at-risk subjects who had not developed psychosis.

For example, in most people, a part of the brain known as the [superior temporal gyrus](#), which is involved in auditory processing, is highly connected to brain regions involved in sensory perception and motor control. However, in patients who developed psychosis, the superior temporal gyrus became more connected to limbic regions, which are involved in processing emotions. This could help explain why patients with schizophrenia usually experience auditory hallucinations, the researchers say.

Meanwhile, the high-risk subjects who did not develop psychosis showed network connectivity nearly identical to that of the healthy subjects.

Early intervention

This type of distinctive brain activity could be useful as an early indicator of schizophrenia, especially since it is possible that it could be seen in even younger patients. The researchers are now performing similar studies with younger at-risk populations, including children with a family history of schizophrenia.

"That really gets at the heart of how we can translate this clinically, because we can get in earlier and earlier to identify aberrant networks in the hopes that we can do earlier interventions, and possibly even prevent psychiatric disorders," Whitfield-Gabrieli says.

She and her colleagues are now testing early interventions that could help to combat the symptoms of schizophrenia, including cognitive

behavioral therapy and neural feedback. The neural feedback approach involves training patients to use mindfulness meditation to reduce activity in the superior temporal gyrus, which tends to increase before and during auditory hallucinations.

The researchers also plan to continue following the patients in the current study, and they are now analyzing some additional data on the white matter connections in the brains of these patients, to see if those connections might yield additional differences that could also serve as early indicators of disease.

Provided by Massachusetts Institute of Technology

APA citation: Brain activity pattern may be early sign of schizophrenia (2018, November 8) retrieved 4 May 2021 from <https://medicalxpress.com/news/2018-11-brain-pattern-early-schizophrenia.html>

This document is subject to copyright. Apart from any fair dealing for the purpose of private study or research, no part may be reproduced without the written permission. The content is provided for information purposes only.