

Study differentiates iPS cells into various ocular lineages

19 December 2018

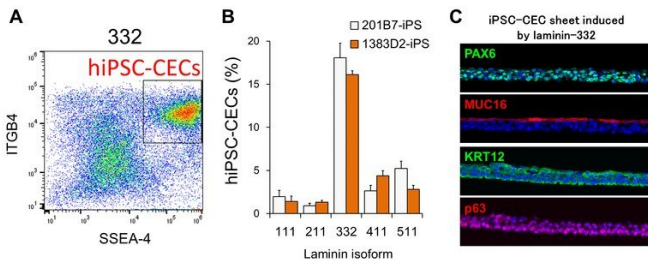


Fig. 1. LN332E8 promotes hiPS cell-derived corneal epithelial cell (iCEC) differentiation. (A, B) hiPSCs differentiated on LN332E8 possessed the highest proportion of iCECs. (C) The 332-iCECs formed a cell sheet that expressed the corneal epithelial markers PAX6, keratin (KRT) 12, p63, and MUC16. Credit: Shibata et al., *Cell Reports* 25, 1668–1679, doi: 10.1016/j.celrep.2018.10.032

The discovery of pluripotent stem cells, which have the ability to differentiate into the huge range of different cell lineages that make up the human body, signaled the start of a new era in biological science and medicine. Although we are also now able to reprogram regular cells to exhibit this pluripotency, we still have much to learn about the different cues that lead such cells towards a particular cell fate, including the cells that make up the eye.

A new study reported in the journal *Cell Reports* has shed light on this by showing that, by growing human pluripotent [stem cells](#) on different forms of a protein called laminin, they can be induced to become corneal cells, retinal cells, and others. The cells could then be collected and used for a range of therapeutic purposes.

This study builds on earlier work by this Osaka University-centered group, which showed that exposing these stem cells to an isoform of laminin, a structural component of the matrix that fills the

space outside of cells, led to the creation of cell colonies arranged as four concentric zones. Each of these zones exhibited characteristics specific to a particular anatomical component of the eye.

Here, the team grew these stem cells under conditions exclusively containing other laminin isoforms that are present in the eye, finding that this led to the creation of cells with different mobilities, densities, and tendencies to interact. They then showed that, for each particular laminin isoform, the different cells produced in the cultures matched those in different parts of the eyes of embryonic mice where the same laminin [isoform](#) predominated.

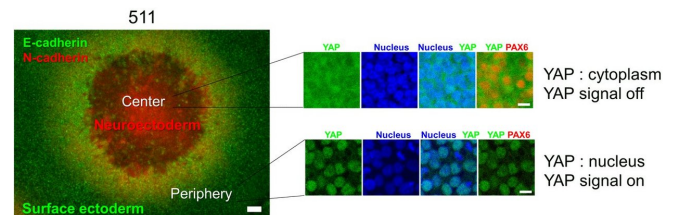


Fig. 2. LN511E8 led to YAP inactivation and retinal differentiation in hiPS cell colony centers. LN511E8 enabled generation of dense hiPS cell colonies due to actomyosin contraction, which in turn led to cell density-dependent YAP inactivation and subsequent retinal differentiation in colony centers. Credit: Shibata et al., *Cell Reports* 25, 1668–1679, doi: 10.1016/j.celrep.2018.10.032

"We found that the different laminin isoforms affected whether and how fast the cells migrated outwards from the point at which the [colony](#) was originally seeded and the density at which the cells in the colony were packed," corresponding author Ryuhei Hayashi. "These different behaviors were related to the kinds of cells that the stem cells turned into, showing that we could specifically

produce an ocular cell type just by choosing the appropriate type of laminin for the targeted cells."

The researchers then investigated the molecular mechanisms behind these different behaviors. They found that the form of **laminin** that gave rise to colonies with four concentric rings caused the contraction of extracellular structural scaffolds that tether cells together, producing higher-density colony centers. This in turn led to the inactivation of a protein called YAP, which promoted the differentiation into retinal-like cells in the colony centers.

different parts of the eye, we can harvest and apply them in treatments for a range of ocular diseases," last author Kohji Nishida says. "This could be an extremely useful tool in the field of ophthalmology."

More information: Shun Shibata et al. Selective Laminin-Directed Differentiation of Human Induced Pluripotent Stem Cells into Distinct Ocular Lineages, *Cell Reports* (2018). DOI: [10.1016/j.celrep.2018.10.032](https://doi.org/10.1016/j.celrep.2018.10.032)

Provided by Osaka University

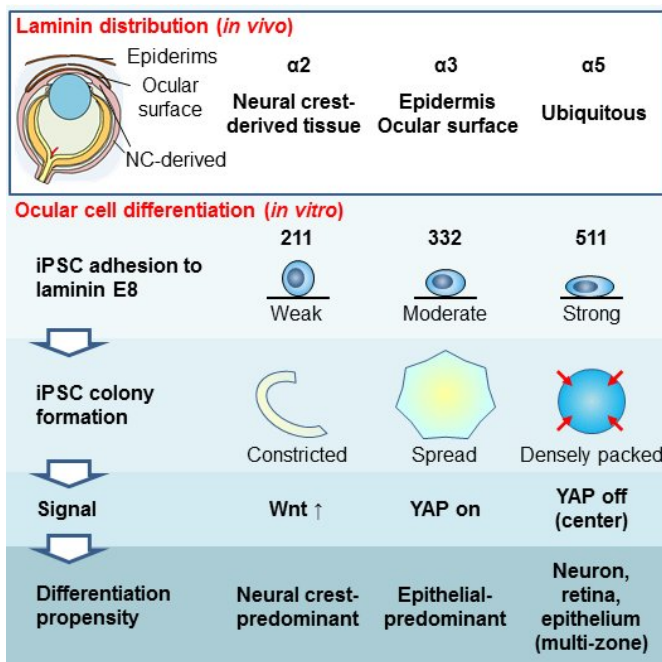


Fig. 3. Mechanism how the laminin isoforms determine hiPS cell status and fate. The binding affinity of substrates and integrins determines the nature of expanded hiPS cell colonies in terms of cell motility, cell–cell interactions, and cell density, with the clear involvement of Wnt and YAP signals. The respective immunohistochemical distributions of these laminin isoforms in the developing mouse eye mirrored hiPS cell type that was induced in vitro. Credit: Shibata et al., *Cell Reports* 25, 1668–1679, doi: 10.1016/j.celrep.2018.10.032

"Now that we can use different laminins to program stem cells to become particular **cells** found in

APA citation: Study differentiates iPS cells into various ocular lineages (2018, December 19) retrieved 12 October 2022 from <https://medicalxpress.com/news/2018-12-differentiates-ips-cells-ocular-lineages.html>

This document is subject to copyright. Apart from any fair dealing for the purpose of private study or research, no part may be reproduced without the written permission. The content is provided for information purposes only.