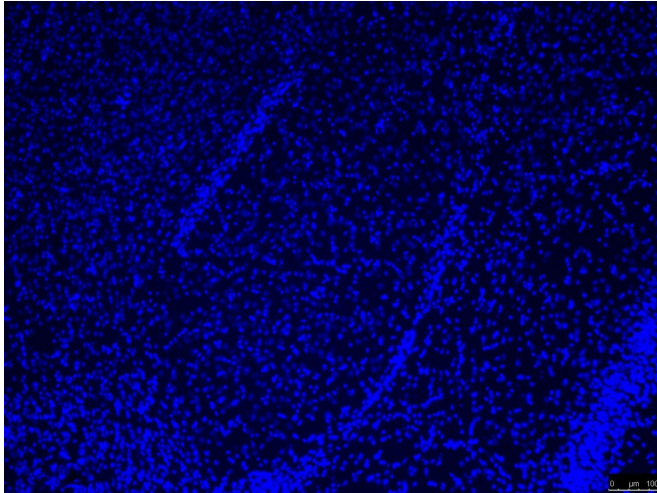


A sociable personality attenuates neuropathic pain and anxiety intensifies it

20 February 2019



Microscopy image of a mouse amygdala. Credit: UPF

Certain personality traits such as sociability, anxiety or depression influence manifestations of neuropathic pain in mice, according to a new study by the Neuropharmacology Laboratory-NeuroPhar at Pompeu Fabra University. The study, led by Rafael Maldonado, has been published in the journal *Neuropharmacology*.

Chronic pain is a serious clinical problem with an enormous economic and social burden. Currently, the effectiveness of chronic neuropathic pain treatment is limited and presents significant adverse effects. Specifically, neuropathic pain appears as a result of a traumatic or degenerative lesion to the nerve structures with no obvious stimulus. This pain is difficult to palliate with conventional therapies and can become severe and disabling.

High variability between individuals in the manifestations of neuropathic pain can lead to a differential response of patients to treatment, making it difficult to establish general therapeutic

guidelines. The reasons for this variability are largely unknown. Therefore, it is important to identify the factors that determine the severity of the manifestations of neuropathic pain in order to tailor treatment to each patient individually.

Following this line, the research team used rodent models to evaluate how sociability, anxiety or depression affect the intensity of neuropathic pain. Miriam Martínez-Navarro, first author of the article, said, "Indeed, the anxiety trait appears as a vulnerability factor leading to increased pain, as well as the consequences on emotional behaviour and memory. By contrast, a sociable personality would exert a positive influence attenuating neuropathic pain."

"Genetic analyses showed that mice with high levels of the expression of genes IL6 and PDYN in the amygdala were more sensitive to pain and these changes also correlate with personality traits," says Rafael Maldonado, full professor of Pharmacology at UPF's Department of Experimental and Health Sciences (DCEXS). These genes encode interleukin-6 and prodynorphin, proteins involved in inflammatory and pain sensitization processes, whose overexpression in neuropathic pain conditions had been previously reported in other areas of the nervous system such as the spinal cord.

Interestingly, the expression of these genes in the amygdala after nerve injury is influenced by personality traits. Thus, the anxiety trait enhances the expression of PDYN and IL6 in the amygdala, while the sociability [trait](#) correlates with a lower expression of PDYN. These data suggest that the impact of [personality](#) traits in the manifestations of neuropathic [pain](#) would be due, in part, to the modulation of gene expression in the amygdala.

"The results of this study may help understand some of the mechanisms that explain the variability of the manifestations of [neuropathic pain](#) according

to [personality traits](#), which could favour the development of more effective personalized treatments for [chronic pain](#)," concludes Rafael Maldonado.

More information: M. Martínez-Navarro et al, Influence of behavioral traits in the inter-individual variability of nociceptive, emotional and cognitive manifestations of neuropathic pain, *Neuropharmacology* (2019). DOI: [10.1016/j.neuropharm.2019.01.012](https://doi.org/10.1016/j.neuropharm.2019.01.012)

Provided by Universitat Pompeu Fabra -
Barcelona

APA citation: A sociable personality attenuates neuropathic pain and anxiety intensifies it (2019, February 20) retrieved 27 April 2021 from <https://medicalxpress.com/news/2019-02-sociable-personality-attenuates-neuropathic-pain.html>

This document is subject to copyright. Apart from any fair dealing for the purpose of private study or research, no part may be reproduced without the written permission. The content is provided for information purposes only.