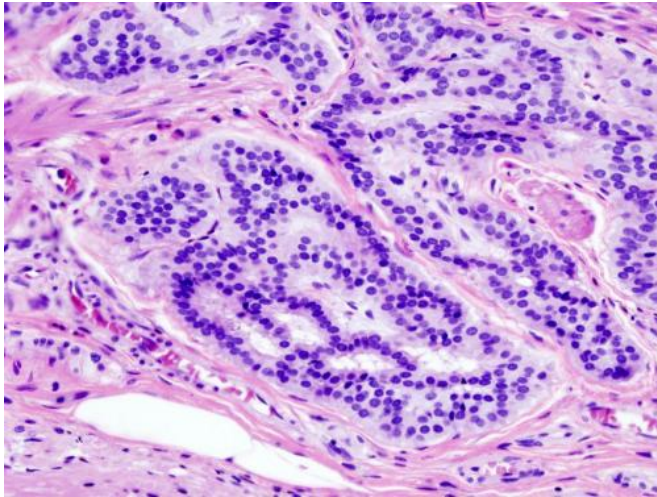


Study compares colonoscopy polyp detection rates and endoscopist characteristics

17 April 2019



Cancer — Histopathologic image of colonic carcinoid.
Credit: Wikipedia/CC BY-SA 3.0

Previous research has suggested that specific factors about the doctor performing colonoscopy—for example, a gastroenterologist versus a surgeon, female versus male—were associated with different rates of detection of precancerous polyps.

However, a Cleveland Clinic-led research team found that those previously described differences among endoscopists are not true.

Adjusting for a myriad of both patient- and doctor-related factors not previously accounted for, Cleveland Clinic researchers concluded that the previously cited differences disappeared in adenoma detection based on the endoscopist features—except when it comes to the detection of sessile serrated polyps, which are difficult to detect and a known precursor of colorectal cancer.

The study data—published in *JAMA Surgery*—showed that lower sessile serrated polyp detection was only associated with endoscopists who had a lower annual volume of colonoscopies and longer years since completion of medical training.

A colonoscopy is a common endoscopic procedure, with more than 14 million examinations performed in the U.S. annually. The efficacy of a colonoscopy to prevent colorectal cancer depends on the quality of the endoscopist to detect and remove lesions that can turn into cancer, such as adenomas and sessile serrated polyps.

"There are national benchmarks that define a high-quality endoscopist. Asking your endoscopist about their personal colonoscopy quality metrics can empower patients to make informed choices about their colonoscopy provider," said Carol Burke, M.D., vice chair of the Department of Gastroenterology, Hepatology & Nutrition at Cleveland Clinic and senior author of the study.

Cleveland Clinic's research team conducted a large, single-center retrospective study that analyzed data from 16,089 average-risk, screening colonoscopies performed by 56 providers (gastroenterologists, 60.7 percent; surgeons, 26.5 percent; advanced endoscopists, 12.5 percent) between January 2015 and June 2017. Twenty-five percent of endoscopists were female and 25 percent were international medical graduates. The providers' median time from training was 16.3 years and they performed a median of 267 colonoscopies per year.

Provider characteristics considered in the study included endoscopist specialty, gender, location of medical school, years since fellowship, number of colonoscopies performed per year, practice setting

and presence of trainee during colonoscopy. The analysis also accounted for numerous patient characteristics not considered in some studies, including age, gender, smoking status, comorbidities such as diabetes and [coronary artery disease](#), medication use, and colonoscopy-related factors, including timing of procedure (month and time of day), location where [colonoscopy](#) was performed, cecal intubation rate, number of polyps found, quality of bowel preparation and withdrawal time.

[10.1001/jamasurg.2019.0564](https://doi.org/10.1001/jamasurg.2019.0564)

Provided by Cleveland Clinic

Using natural language processing, the researchers were able to extract and read large amounts of textual data from the electronic medical records of the 16,089 patients that would otherwise have been difficult to access. Only endoscopists performing more than 100 colonoscopies per year were included.

In the study, the average adenoma detection rate was 31.3 percent, which was above the minimum national standards suggested by the ASGE-ACG quality task force guidelines. The results of this analysis showed that no endoscopist characteristics—including medical specialty and gender—are associated with adenoma detection rate.

Regarding the proximal sessile serrated polyp detection rate, the overall rate of 4.6 percent was similar to other recent studies. The only endoscopist factors associated with a lower proximal sessile serrated polyp detection rate included endoscopists who perform lower volumes of colonoscopies and who are further from their medical training.

"Sessile serrated polyps were characterized in 2005. They are often in the proximal colon, very subtle with their flat appearance, and thus difficult to detect. These features are probably why proximal sessile serrated polyps are a major cause of interval colon cancer—cancer that occurs between two colonoscopies. Our findings reinforce the need for endoscopists to stay abreast of current resources to improve their detection and resection of sessile serrated polyps," Dr. Burke said.

More information: *JAMA Surgery* (2019). [DOI:](#)

APA citation: Study compares colonoscopy polyp detection rates and endoscopist characteristics (2019, April 17) retrieved 1 November 2022 from <https://medicalxpress.com/news/2019-04-colonoscopy-polyp-endoscopist-characteristics.html>

This document is subject to copyright. Apart from any fair dealing for the purpose of private study or research, no part may be reproduced without the written permission. The content is provided for information purposes only.