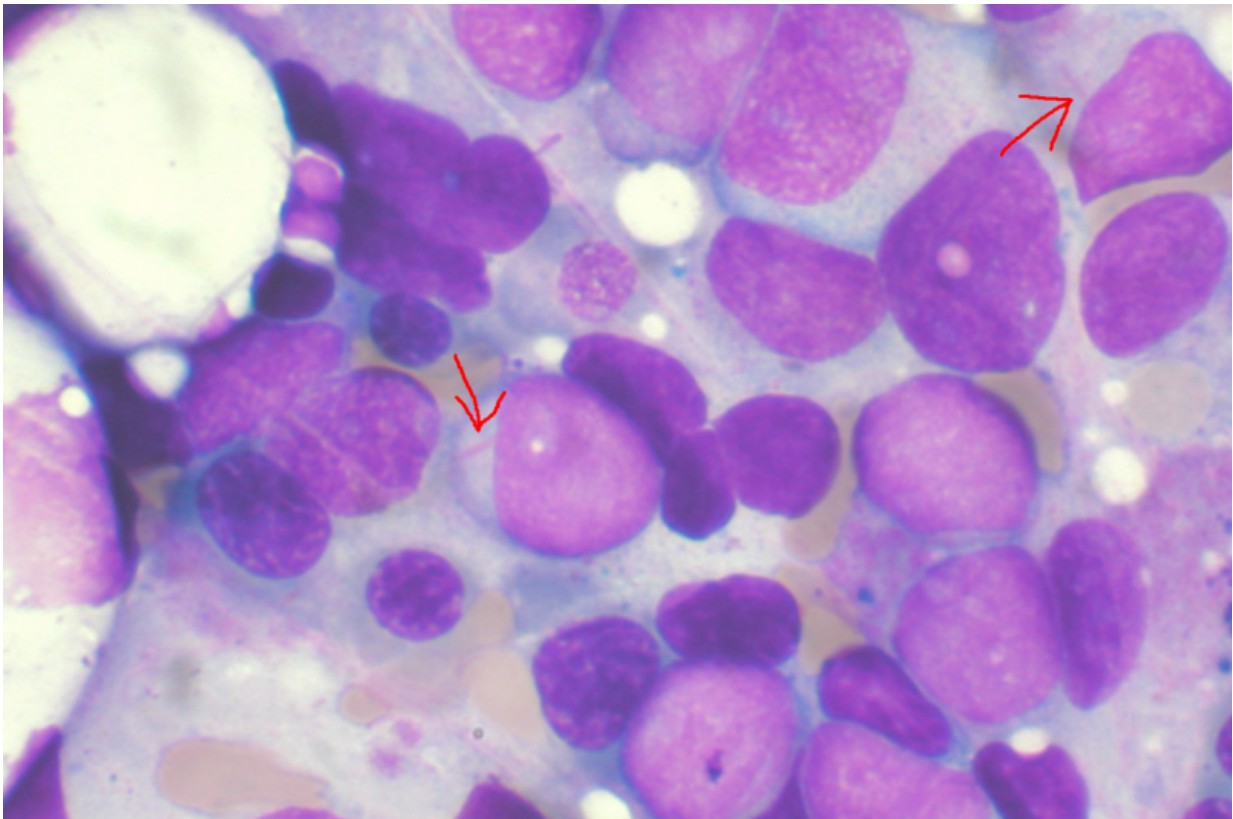


# Old cells, new tricks—important clue to AML diagnosis and cure discovered

August 1 2019

---



Bone marrow aspirate showing acute myeloid leukemia. Several blasts have Auer rods. Credit: Wikipedia

Around 22,000 people will be diagnosed this year in the US with acute myeloid leukemia (AML), the second most common type of leukemia

diagnosed in adults and children, and the most aggressive of the leukemias. Less than one third of AML patients survive five years beyond diagnosis.

Researchers from Australia's Monash University have discovered a key reason why this disease is so difficult to treat and therefore cure.

The study, led by Associate Professor Ross Dickins from the Australian Centre for Blood Diseases, is published today in the prestigious journal *Cell Stem Cell*. The paper identifies an important new concept relevant to clinicians involved in the diagnosis and treatment of AML patients.

Acute myeloid leukemia is characterised by an overproduction of immature white blood cells that fail to mature properly. These [leukaemia](#) cells crowd the bone marrow, preventing it from making normal blood cells. In turn this causes anaemia, infections, and if untreated, death.

Acute myeloid leukemia remains a significant health problem, with poor outcomes despite chemotherapy and stem cell transplantation.

For decades it has been thought that AML growth is driven by a sub-population of immature cancer cells called 'leukaemia stem cells', which lose their cancerous properties when they mature. Hence there has been growing international interest in developing therapies aimed at forcing immature cancer cells to 'grow up'.

Using genetically engineered mouse models and human AML cells, Associate Professor Dickins and his Monash-led team have found that maturation of AML cells is not unidirectional as originally thought, but can instead be reversible.

The team, which also includes researchers from the Walter and Eliza Hall Institute of Medical Research and several international

collaborators, found that even mature AML cells can 'turn back the clock' to become immature again.

This plasticity means that even mature AML cells can make a major contribution to future leukaemia progression and therapy resistance.

The discovery has significant implications for the way that AML is treated, according to Associate Professor Dickins. "The AML field has traditionally accepted a model where [leukemia](#) maturation is a one-way street," he said.

"By demonstrating reversible leukaemia maturation, our study raises doubts around therapeutic strategies that specifically target just leukaemia stem cells. It highlights the need to eradicate all tumour cells irrespective of maturation state."

These new findings are important because several new drugs that force leukaemia cells to mature have now entered the clinic. The study by Dickins and colleagues will help clinicians re-shape their thinking to find ways to eradicate mature leukaemia [cells](#) along with their immature counterparts.

**More information:** *Cell Stem Cell* (2019). [DOI: 10.1016/j.stem.2019.07.001](#)

Provided by Monash University

Citation: Old cells, new tricks—important clue to AML diagnosis and cure discovered (2019, August 1) retrieved 24 January 2023 from <https://medicalxpress.com/news/2019-08-cells-tricksimportant-clue-aml-diagnosis.html>

This document is subject to copyright. Apart from any fair dealing for the purpose of private study or research, no part may be reproduced without the written permission. The content is provided for information purposes only.