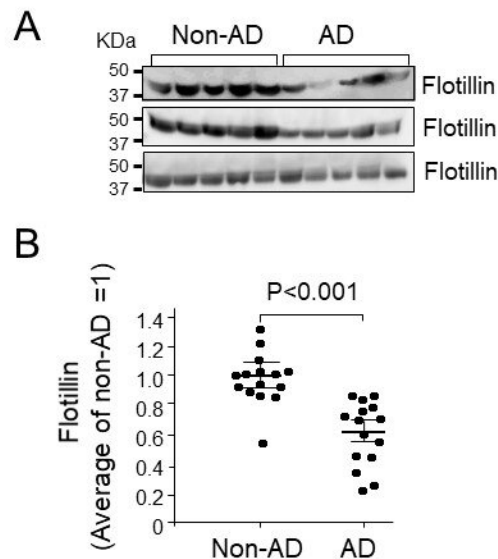


Flotillin is a novel diagnostic blood marker of Alzheimer's disease

November 4 2019



Flotillin in serum collected from patients with AD and non-AD cases was examined by western blot analysis. Intensity of flotillin bands was quantified using Image J. A, The representative results analyzed by western blot are shown. B, The quantitative analysis was performed and relative value of intensity of each band was normalized by the average value of flotillin in patients with non-AD as 1. Non-AD group, n=15; AD group, n=15. Data are mean \pm S.E.M.

Statistical analysis was performed by ANOVA. Credit: © Makoto Michikawa

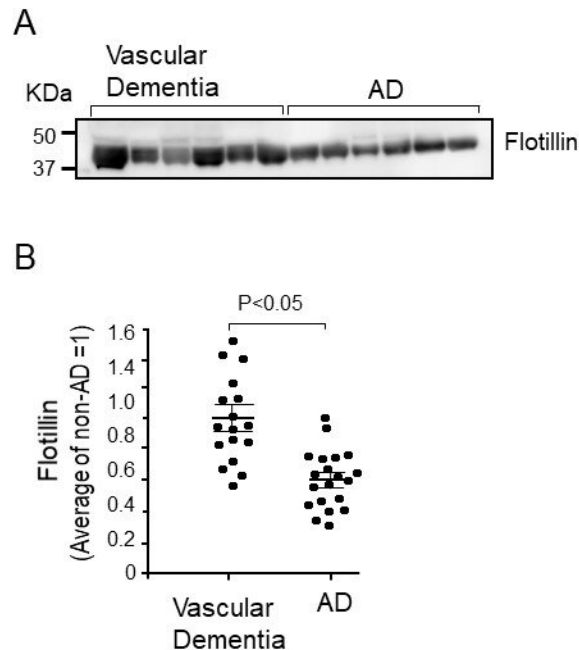
Currently, best-characterized indicators for Alzheimer's disease (AD) diagnosis are the decreased levels of amyloid β -protein 42 and increased levels of phosphorylated tau in cerebrospinal fluid (CSF). Positron emission tomography (PET) imaging with Pittsburgh compound B (PiB) is also used in AD diagnosis by visualizing amyloid deposition in the brain. Because these methods are invasive or expensive, less invasive and easily detectable blood biomarkers are required. Because our previous study showed that flotillin release, a marker of exosomes, was attenuated by $A\beta$, we designed the present study to determine whether flotillin levels could be reduced in CSF and/or serum of patients with AD.

In this study, Dr. Makoto Michikawa (Professor, Nagoya City University) and his collaborators analyzed flotillin levels in CSF and serum of non-AD controls and patients with AD and [mild cognitive impairment](#) (MCI) by western blotting. Flotillin levels in cerebroventricular fluid (CVF) and serum of AD, [vascular dementia](#) (VD), and non-AD autopsy cases are also analyzed. Flotillin levels significantly decreased in the CSF and serum of AD patients compared with those of non-AD controls, respectively.

Moreover, in patients with MCI due to AD determined by PiB-PET, CSF and serum flotillin levels significantly decreased compared with those of patients with MCI due to non-AD. Flotillin levels remained unchanged in CVF and serum of autopsy cases diagnosed as VD. Serum flotillin level is negatively associated with brain amyloid deposition indicated as PiB uptake.

These results demonstrate that serum flotillin level can serve as one of the blood markers for estimation of brain amyloid deposition and early

diagnosis of AD.



Western blot analysis of serum obtained from autopsy cases with AD and VD was performed according to the methods described in the Methods section. A, Representative Western blot of flotillin in serum from the autopsy cases with AD and VD. B, The intensities of flotillin bands were measured using Image J and the intensity of each band was normalized by the average value of samples from cases with VD as 1. The serum flotillin levels significantly decreased in cases with AD compared with cases with VD. VD group, n=17; AD group, n=20. Data are mean \pm S.E.M. Statistical analysis was performed by ANOVA. Credit: © Makoto Michikawa

More information: Mohammad Abdullah et al. Flotillin is a Novel Diagnostic Blood Marker of Alzheimer's Disease, *Journal of Alzheimer's Disease* (2019). [DOI: 10.3233/JAD-190908](https://doi.org/10.3233/JAD-190908)

Provided by Nagoya City University

Citation: Flotillin is a novel diagnostic blood marker of Alzheimer's disease (2019, November 4) retrieved 29 April 2023 from <https://medicalxpress.com/news/2019-11-flotillin-diagnostic-blood-marker-alzheimer.html>

This document is subject to copyright. Apart from any fair dealing for the purpose of private study or research, no part may be reproduced without the written permission. The content is provided for information purposes only.