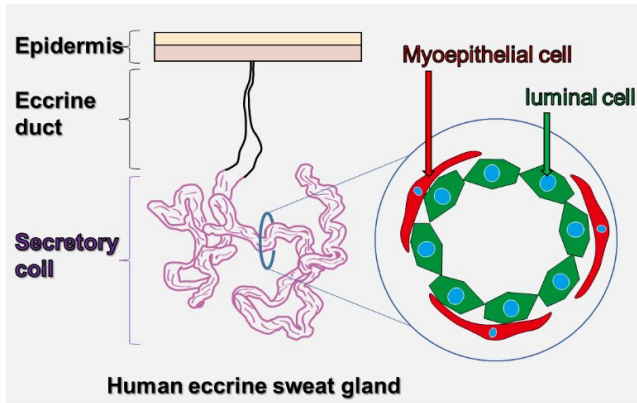


Perspiration problems? No sweat!

8 May 2020



The structure of a human eccrine gland. Credit: Osaka University

Solving sweat-related concerns that occur in daily life, such as hyperhidrosis and sweat smell, can improve people's quality of life. Now, researchers from Osaka University, in collaboration with Mandom Corporation, have succeeded in generating immortalized human eccrine sweat gland myoepithelial cells (iEM cells). Their findings could help develop next-generation antiperspirants and promote research on sweat dysfunction and sweat gland regeneration.

To control sweating, the researchers had to understand the properties of the [cells](#) that make up [sweat](#) glands and regulate their function. Myoepithelial cells found in sweat glands are involved in the contraction of the glands and function as [stem cells](#) to maintain the homeostasis of the glands, playing an important role in human sweating.

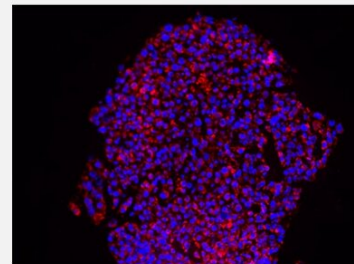
Cultured cells are useful for elucidating the function of human eccrine sweat [gland](#) myoepithelial cells; however, up until now, no human eccrine sweat gland cell line has retained the characteristics of myoepithelial cells.

In 2016, the research team established a method

enabling human eccrine sweat gland cells to maintain the characteristics of myoepithelial cells for a short time by culturing human eccrine sweat gland myoepithelial cells under conditions similar to those in vivo.

"We focused on the fact that human eccrine sweat gland myoepithelial cells cultured in an environment similar to that of in vivo form a spherical structure covered with myoepithelial cells. Direct introduction of an immortalizing gene into the spherical structure enabled us to efficiently immortalize human eccrine sweat gland myoepithelial cells, achieving a breakthrough in generating iEM cells," says Fumihiko Okada, who led the study.

Cell type	Proliferation rate (times)	Possible passage number (generation)
Human eccrine sweat gland myoepithelial cell	90	3
Immortalized human eccrine sweat gland myoepithelial cell	2.8×10^{25}	≥ 10



Red cells indicate human eccrine sweat gland myoepithelial cells expressing a characteristic gene (α -SMA).

Viability of immortalized human eccrine sweat gland myoepithelial (iEM) cells established in this research, and expression of a characteristic gene. Credit: Osaka University

Human eccrine sweat gland myoepithelial cells could previously be subcultured for only around three generations. iEM cells, on the other hand, can

be subcultured for more than ten generations. Moreover, iEM cells express α -smooth muscle actin (α -SMA), a gene that supports the function of human myoepithelial cells, retaining their properties.

Now, the material transfer agreement for iEM cells allows the cells to be transferred through Applied Biological Material Inc. to research institutes in many countries worldwide. "We expect that iEM cells, as a new test system for [sweat glands](#), will aid in the development of antiperspirants, treatment of sweat gland disorders, and regeneration of sweat gland tissue."

More information: Product HP:

www.abmgood.com/immortalized-s...ial-cells.html#T0816

Provided by Osaka University

APA citation: Perspiration problems? No sweat! (2020, May 8) retrieved 8 November 2022 from <https://medicalxpress.com/news/2020-05-perspiration-problems.html>

This document is subject to copyright. Apart from any fair dealing for the purpose of private study or research, no part may be reproduced without the written permission. The content is provided for information purposes only.