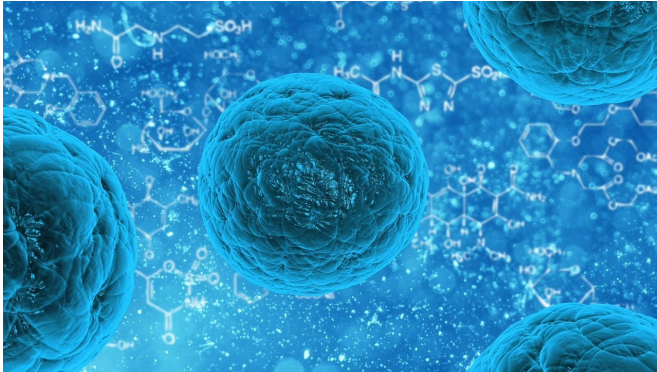


# Scientists reverse a key hallmark of motor neuron disease in the laboratory

6 August 2021



Credit: CC0 Public Domain

Scientists at the Francis Crick Institute and UCL have studied how proteins accumulate in the wrong parts of brain cells in motor neuron disease, and have demonstrated how it might be possible, in some cases, to reverse this.

Amyotrophic lateral sclerosis (ALS), more commonly known as [motor neuron disease](#), is a progressive fatal disease that affects nerve cells in the brain and [spinal cord](#), causing loss of muscle control, with patients become increasingly paralyzed and losing the ability to speak, eat and breathe.

A common occurrence, in 97% of ALS cases, is the abnormal accumulation of proteins involved in the regulation of RNA, called RNA binding proteins, from a motor neuron's nucleus into the surrounding cytoplasm.

In a new study, published in *Brain Communications* today, the researchers used motor neurons grown in the lab from [skin cells](#) donated by patients with ALS and showed it is possible to reverse the incorrect localization of three RNA binding proteins. The patients who donated cells all had

mutations in an enzyme called VCP. This mutation is only present in a small proportion of ALS cases.

They found that the abnormal location of these proteins can be caused when the VCP enzyme is mutated, which has been shown to increase its activity.

Importantly, when the researchers blocked the activity of this enzyme in diseased cells, the distribution of proteins between the nucleus and the cytoplasm returned to normal levels. The inhibitor they used is similar to a drug which is currently being tested in phase II cancer trials and also blocks the activity of VCP.

"Demonstrating proof-of-concept for how a chemical can reverse one of the key hallmarks of ALS is incredibly exciting," says Jasmine Harley, author and postdoctoral researcher in the Human Stem Cells and Neurodegeneration Laboratory at the Crick. "We showed this worked on three key RNA binding proteins, which is important as it suggests it could work on other disease phenotypes too." "More research is needed to investigate this further. We need to see if this might reverse other pathological hallmarks of ALS and also, in other ALS disease models."

Work to try and understand the disease mechanisms of ALS is ongoing, as seen in a second study the same group recently published in [Brain](#). The scientists investigated intron-retaining transcripts, sections of RNA that are usually cut out of the genetic sequence during a process known as splicing, which also move from the cell nucleus to cytoplasm in ALS. By analyzing RNA in diseased motor neurons, they identified over 100 types of intron-retaining transcripts in the cytoplasm.

Giulia Tyzack, author and project research scientist in the Human Stem Cells and Neurodegeneration Laboratory, says: "We were quite surprised about the number of different intron-retaining transcripts

we found in [cells](#) with ALS, which exit the nucleus and enter the cytoplasm. We were not expecting to observe this to this degree."

Jacob Neeves, author and scientist in the Human Stem Cells and Neurodegeneration Laboratory, adds: "To imagine what's going on here we can consider watching a movie at the cinema. Typically, we don't expect to see adverts throughout the film, but, if something goes wrong these ads might start cropping up at odd and unexpected points. These retained introns are a little bit like these abnormal ad breaks."

The scientists suggest that the collection of intron-retaining transcripts in the cytoplasm may be a factor which attracts RNA binding proteins to move into the [cytoplasm](#), although more research is needed to confirm this.

Rickie Patani, senior author, group leader of the Human Stem Cells and Neurodegeneration Laboratory at the Crick, Professor at UCL's Queen Square Institute of Neurology and a consultant neurologist at the National Hospital for Neurology and Neurosurgery, says: "Together, our two papers show how laboratory science is furthering our understanding of such a complex and devastating [disease](#) and provides some reassurance that the development of effective treatments may be possible in the future."

**More information:** Jasmine Harley et al, TDP-43 and FUS mislocalization in VCP mutant motor neurons is reversed by pharmacological inhibition of the VCP D2 ATPase domain, *Brain Communications* (2021). DOI: [10.1093/braincomms/fcab166](https://doi.org/10.1093/braincomms/fcab166)

Provided by The Francis Crick Institute

APA citation: Scientists reverse a key hallmark of motor neuron disease in the laboratory (2021, August 6) retrieved 31 August 2022 from <https://medicalxpress.com/news/2021-08-scientists-reverse-key-hallmark-motor.html>

*This document is subject to copyright. Apart from any fair dealing for the purpose of private study or research, no part may be reproduced without the written permission. The content is provided for information purposes only.*