

Study: Exposure to air pollution linked with increased mental health service use

August 27 2021

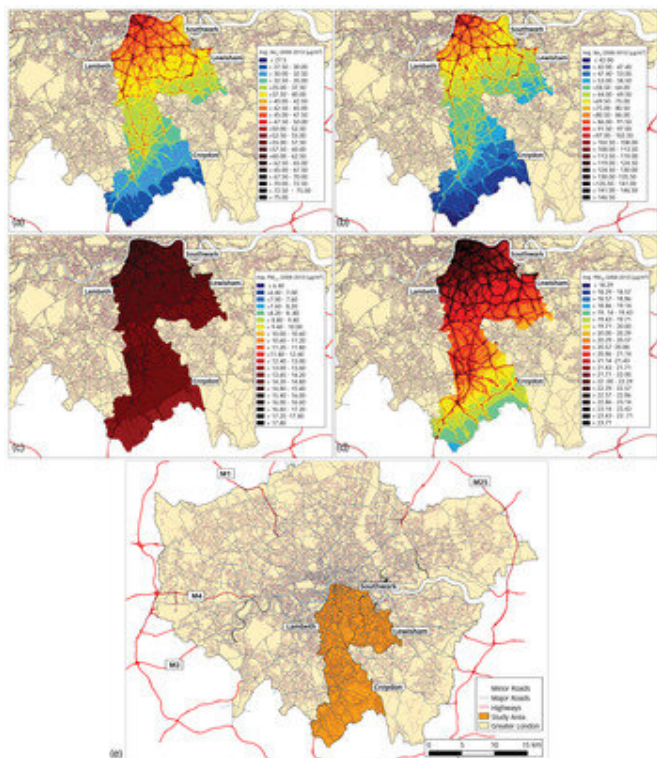


Fig. 1 Air pollution concentrations in the four-borough catchment area averaged across 2008–2012. (a) Nitrogen dioxide (NO₂). (b) Nitrogen oxides (NO_x). (c) Particulate matter

APA citation: Study: Exposure to air pollution linked with increased mental health service use (2021, August 27) retrieved 10 December 2022 from <https://medicalxpress.com/news/2021-08-exposure-air-pollution-linked-mental.html>

This document is subject to copyright. Apart from any fair dealing for the purpose of private study or research, no part may be reproduced without the written permission. The content is provided for information purposes only.